

2300B Air Adjusted Coupling

ORDERING INFORMATION



OPERATION WITH
OR WITHOUT AIR
SERVICE CHAMBER

Coupling Only:
- 2300B

Standard Installation Kit:

- 2300BC: 2300B Coupling, 503 Bolt Kit, 281C Air Chamber, 271 Thimble

Optional Accessories:

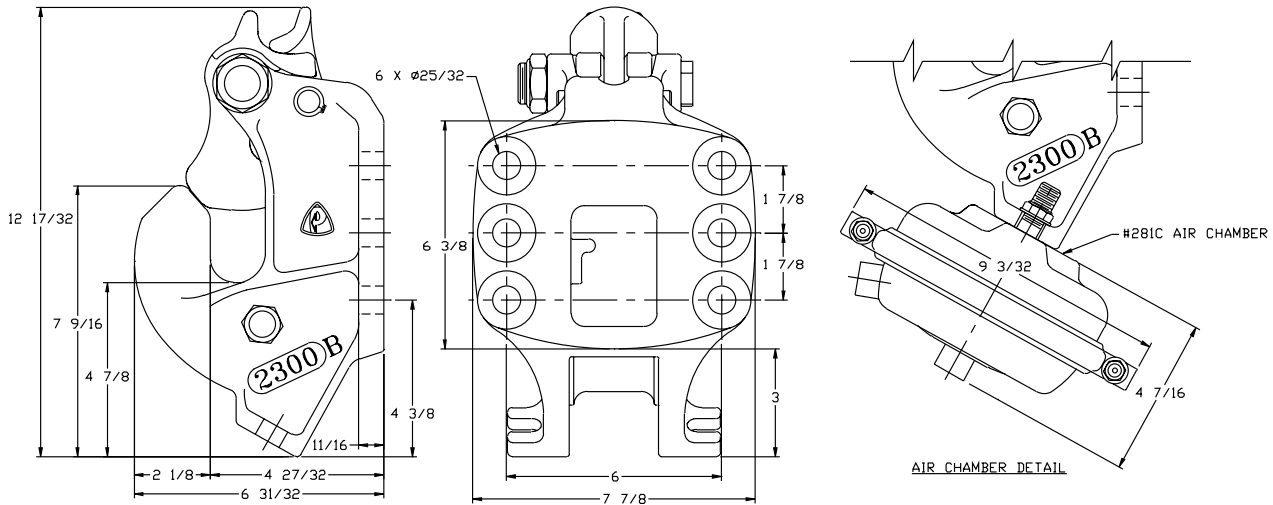
- **Air Chamber 282 Type-30 (page 67):** Provides a larger diaphragm for greater shoe force compared to 281C Air Chamber.
- **Thimbles (page 67):** 271B (4 3/8 in. / 111 mm), 271C (5 1/2 in. / 140 mm)
- **Drawbar Guides 378 (page 66):** Helps guide drawbar eye into coupling.
- **Wear Gage 14014 (page 66):** To determine hook wear limits.
- **Latch Gage 14026 (page 66):** To determine latch gap limit.

Similar to our 2300 (page 9), the 2300B offers a bottom mount air chamber design for installations where rear clearance is a problem. Like all our 2000 series, our 2300B is also made from Premalloy for long life. All 2000 series couplings can be operated with or without an air service chamber.

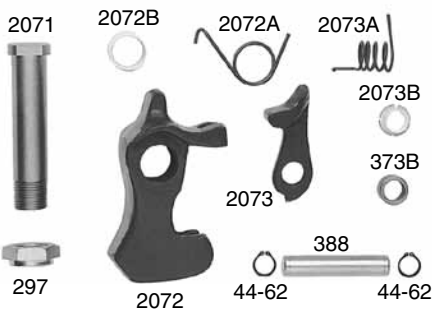
SPECIFICATIONS

Maximum Gross Trailer Weight:	100,000 lbs.	(45,359 kg)
Maximum Tongue Weight:	20,000 lbs.	(9,071 kg)
Ultimate Latch Capacity:	60,000 lbs.	(27,215 kg)
Maximum Eye X-Section:	1 13/16 in.	(46 mm)
Minimum Eye Opening:	2 3/8 in.	(60 mm)
Unit Weight:	32.5 lbs.	(14.7 kg)

STANDARD INSTALLATION DRAWING



REPLACEMENT PART INFORMATION



2000PK Parts Kit Includes:

- | | |
|----------------------|------------------|
| 44-62: Snap Ring (2) | 2073: Latch Lock |
| 297: Locknut | 2073A: Spring |
| 373B: Spacer | 2073B: Bushing |
| 388: Pin | *271: Thimble |
| 2071: Bolt | *374: Bolt |
| 2072: Latch | *274A: Locknut |
| 2072A: Spring | *376: Spring |
| 2072B: Bushing | *379: Shoe |

*Not included in parts kit, available individually.

IMPORTANT GUIDELINES that apply to all Premier Air Adjusted Couplings

- Do not weld on any coupling assembly
- Always use Grade-8 fasteners properly torqued
- Do not apply lubricants to the coupling hook
- Air service chamber must be Type-24 or Type-30 with 90-120 PSI air supply
- Clean & inspect coupling for damage & excessive wear prior to each and every use
- Lubricate all coupling components at a minimum of 90 day intervals
- Do not bind-up (Jackknife) any application as stresses can cause damage to products or components, resulting in failure and detachment of the trailer while in use

