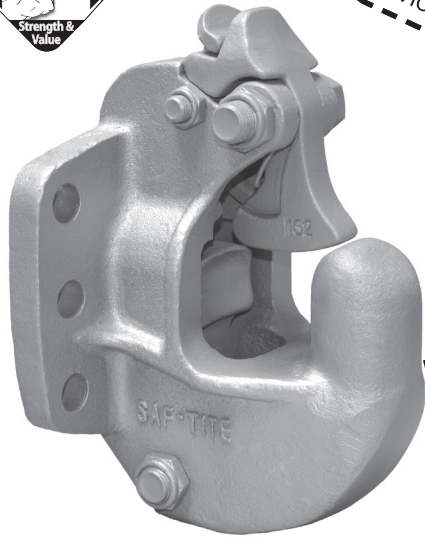


100-3 Saf-Tite Air Adjusted Coupling



OPERATION WITH
OR WITHOUT AIR SER-
VICE CHAMBER

→ New
Product

The Saf-Tite 100-3 has the same popular mounting bolt pattern as our 2300 & 370 models.

ORDERING INFORMATION

Coupling Only:

- 100-3

Standard Installation Kit:

- 100-3A: 100-3 Coupling, 502 Bolt Kit, 281 Air Chamber, 467 Air Chamber Adapter Bracket, 271 Thimble

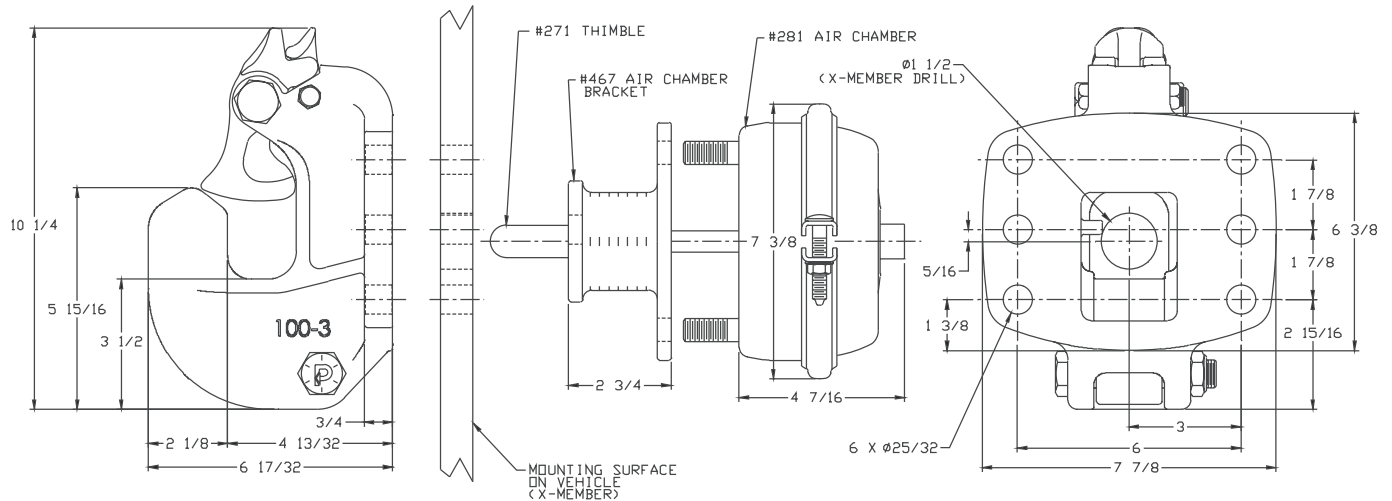
Optional Accessories:

- **Air Chamber 282 Type-30 (page 76):** Provides a larger diaphragm for greater shoe force compared to 281 Air Chamber.
- **Air Chamber Brackets (page 76):** 467H (3/4 in. / 19 mm), 467F (5 1/2 in. / 140 mm)
- **Thimbles (page 76):** 271B (4 3/8 in. / 111 mm), 271C (5 1/2 in. / 140 mm)
- **Wear Gage 14014 (page 75):** To determine hook wear limits.
- **Latch Gage 14026 (page 75):** To determine latch gap limit.

SPECIFICATIONS

Maximum Gross Trailer Weight:	100,000 lbs.	(45,359 kg)
Maximum Tongue Weight:	18,000 lbs.	(8,164 kg)
Ultimate Latch Capacity:	20,000 lbs.	(9,071 kg)
Maximum Eye X-Section:	1 13/16 in.	(46 mm)
Minimum Eye Opening:	2 3/8 in.	(60 mm)
Unit Weight:	30.5 lbs.	(13.8 kg)

STANDARD INSTALLATION DRAWING



Pushrod length is 3 1/8 in. (79 mm) plus thickness of mounting structure for standard installations as illustrated.

REPLACEMENT PART INFORMATION

Model 100-3 Parts Available:

- | | |
|-----------------|-------------------|
| 101: Bolt | 266: Spring |
| 101A: Lock Nut | 271: Thimble |
| 102: Bolt | 274: Bolt |
| 132: Latch | 274A: Locknut (2) |
| 132A: Spring | 279: Shoe |
| 132B: Bushing | |
| 133: Latch Lock | |
| 133A: Spring | |
| 134B: Bushing | |



IMPORTANT GUIDELINES that apply to all Premier Air Adjusted Couplings

- Do not weld on any coupling assembly
- Always use Grade-8 fasteners properly torqued
- Do not apply lubricants to the coupling hook
- Air service chamber must be Type-24 or Type-30 with 90-120 PSI air supply
- Clean & inspect coupling for damage & excessive wear prior to each and every use
- Lubricate all coupling components at a minimum of 90 day intervals
- Do not bind-up (Jackknife) any application as stresses can cause damage to products or components, resulting in failure and detachment of the trailer while in use

