

2400H Air Adjusted Coupling



OPERATION WITH
OR WITHOUT AIR
SERVICE CHAMBER

Similar to our 2400 (page 11), but with a different mounting pattern. All 2000 series couplings can be operated with or without an air service chamber.

ORDERING INFORMATION

Coupling Only:

- 2400H

Standard Installation Kit:

- 2400HA: 2400H Coupling, 508 Bolt Kit, 281 Air Chamber, 467 Air Chamber Adapter Bracket, 271 Thimble

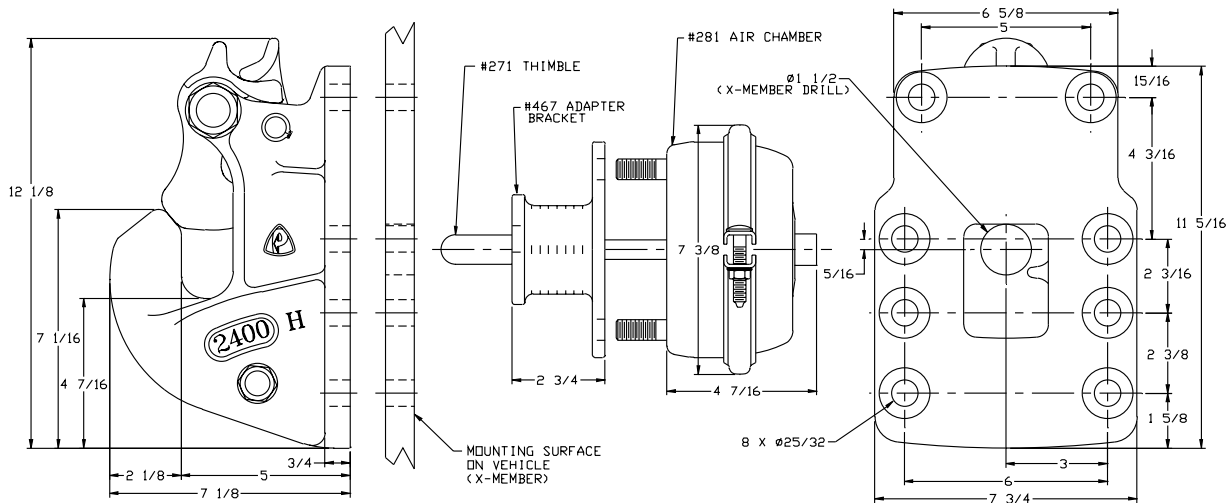
Optional Accessories:

- Air Chamber 282 Type-30 (page 67): Provides a larger diaphragm for greater shoe force compared to 281 Air Chamber.
- Air Chamber Brackets (page 67): 467H (3/4 in. / 19 mm), 467F (5 1/2 in. / 140 mm)
- Thimbles (page 67): 271B (4 3/8 in. / 111 mm), 271C (5 1/2 in. / 140 mm)
- Drawbar Guides 438 (page 66): Helps guide drawbar eye into coupling.
- Wear Gage 14014 (page 66): To determine hook wear limits.
- Latch Gage 14026 (page 66): To determine latch gap limit.

SPECIFICATIONS

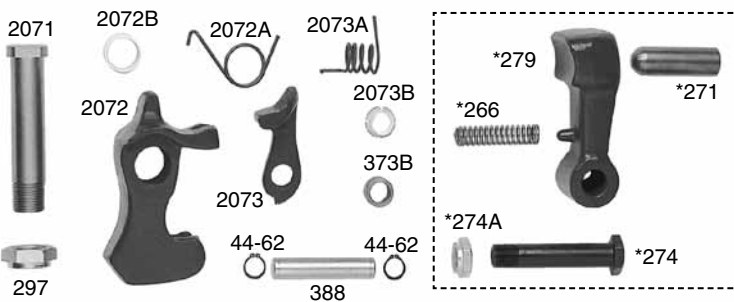
Maximum Gross Trailer Weight:	100,000 lbs.	(45,359 kg)
Maximum Tongue Weight:	20,000 lbs.	(9,071 kg)
Ultimate Latch Capacity:	60,000 lbs.	(27,215 kg)
Maximum Eye X-Section:	1 13/16 in.	(46 mm)
Minimum Eye Opening:	2 3/8 in.	(60 mm)
Unit Weight:	38.7 lbs.	(17.6 kg)

STANDARD INSTALLATION DRAWING



Pushrod length is 3 5/8 in. (92 mm) plus thickness of mounting structure for standard installations as illustrated.

REPLACEMENT PART INFORMATION



2000PK Parts Kit Includes:

- | | |
|----------------------|----------------|
| 44-62: Snap Ring (2) | 2073A: Spring |
| 297: Locknut | 2073B: Bushing |
| 373B: Spacer | *266: Spring |
| 388: Pin | *271: Thimble |
| 2071: Bolt | *274: Bolt |
| 2072: Latch | *274A: Locknut |
| 2072A: Spring | *279: Shoe |
| 2072B: Bushing | |
| 2073: Latch Lock | |

*Not included in parts kit, available individually.

IMPORTANT GUIDELINES that apply to all Premier Air Adjusted Couplings

- Do not weld on any coupling assembly
- Always use Grade-8 fasteners properly torqued
- Do not apply lubricants to the coupling hook
- Air service chamber must be Type-24 or Type-30 with 90-120 PSI air supply
- Clean & inspect coupling for damage & excessive wear prior to each and every use
- Lubricate all coupling components at a minimum of 90 day intervals
- Do not bind-up (Jackknife) any application as stresses can cause damage to products or components, resulting in failure and detachment of the trailer while in use

