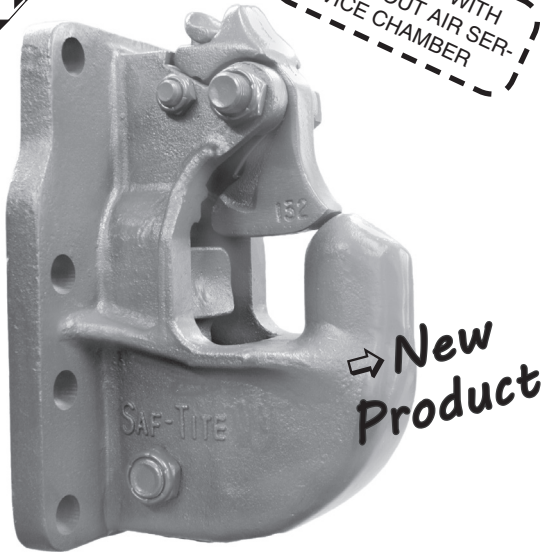


# 100-4H Saf-Tite Air Adjusted Coupling



OPERATION WITH  
OR WITHOUT AIR SER-  
VICE CHAMBER



The Saf-Tite 100-4H has the same popular mounting bolt pattern as our 2400H & 470H models.

## ORDERING INFORMATION

### Coupling Only:

- 100-4H

### Standard Installation Kit:

- 100-4HA: 100-4H Coupling, 508 Bolt Kit, 281 Air Chamber, 467 Air Chamber Adapter Bracket, 271 Thimble

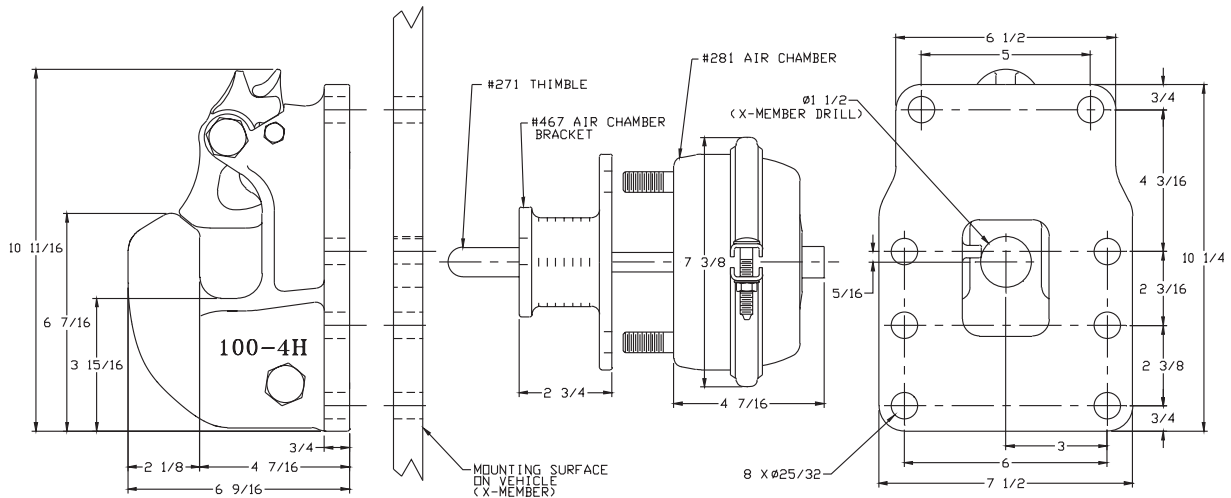
### Optional Accessories:

- **Air Chamber 282 Type-30 (page 76):** Provides a larger diaphragm for greater shoe force compared to 281 Air Chamber.
- **Air Chamber Brackets (page 76):** 467H (3/4 in. / 19 mm), 467F (5 1/2 in. / 140 mm)
- **Thimbles (page 76):** 271B (4 3/8 in. / 111 mm), 271C (5 1/2 in. / 140 mm)
- **Wear Gage 14014 (page 75):** To determine hook wear limits.
- **Latch Gage 14026 (page 75):** To determine latch gap limit.

## SPECIFICATIONS

<b>Maximum Gross Trailer Weight:</b>	110,000 lbs.	(49,896 kg)
<b>Maximum Tongue Weight:</b>	20,000 lbs.	(9,071 kg)
<b>Ultimate Latch Capacity:</b>	20,000 lbs.	(9,071 kg)
<b>Maximum Eye X-Section:</b>	1 13/16 in.	(46 mm)
<b>Minimum Eye Opening:</b>	2 3/8 in.	(60 mm)
<b>Unit Weight:</b>	34.8 lbs.	(15.8 kg)

## STANDARD INSTALLATION DRAWING

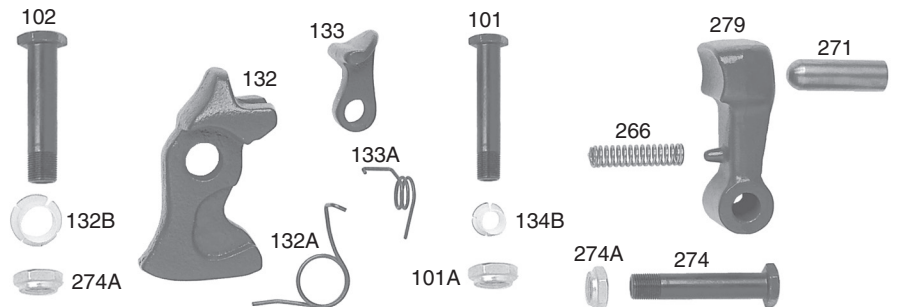


Pushrod length is 3 1/8 in. (79 mm) plus thickness of mounting structure for standard installations as illustrated.

## REPLACEMENT PART INFORMATION

### Model 100-4H Parts Available:

- |                 |                   |
|-----------------|-------------------|
| 101: Bolt       | 266: Spring       |
| 101A: Lock Nut  | 271: Thimble      |
| 102: Bolt       | 274: Bolt         |
| 132: Latch      | 274A: Locknut (2) |
| 132A: Spring    | 279: Shoe         |
| 132B: Bushing   |                   |
| 133: Latch Lock |                   |
| 133A: Spring    |                   |
| 134B: Bushing   |                   |



## IMPORTANT GUIDELINES that apply to all Premier Air Adjusted Couplings

- Do not weld on any coupling assembly
- Always use Grade-8 fasteners properly torqued
- Do not apply lubricants to the coupling hook
- Air service chamber must be Type-24 or Type-30 with 90-120 PSI air supply
- Clean & inspect coupling for damage & excessive wear prior to each and every use
- Lubricate all coupling components at a minimum of 90 day intervals
- Do not bind-up (Jackknife) any application as stresses can cause damage to products or components, resulting in failure and detachment of the trailer while in use

