

360 Air Adjusted Coupling



Used by many tanker fleets and where equipment uncoupling is infrequent, the 360 features a popular 6-bolt, bolt-hole pattern, unique triple latching system and of course our Premalloy body for maximum wear resistance. This coupling must be used with an air service chamber.

ORDERING INFORMATION

Coupling Only:
- 360

Standard Installation Kit:

- **360A:** 360 Coupling, 502 Bolt Kit, 281 Air Chamber, 467 Air Chamber Adapter Bracket, 271 Thimble

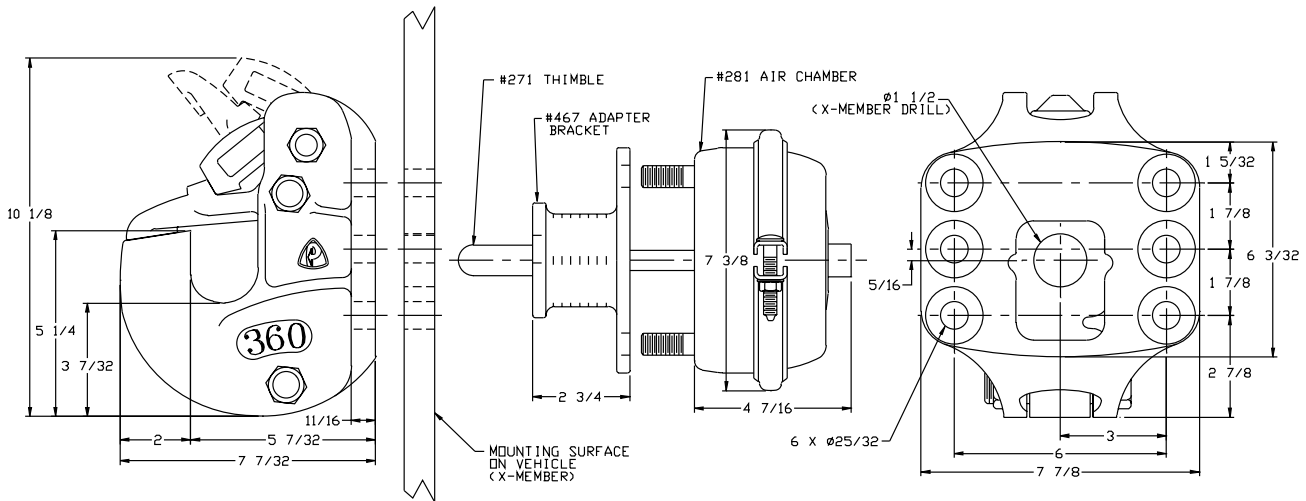
Optional Accessories:

- **Air Chamber 282 Type-30 (page 67):** Provides a larger diaphragm for greater shoe force compared to 281 Air Chamber.
- **Air Chamber Brackets (page 67):** 467H (3/4 in. / 19 mm), 467F (5 1/2 in. / 140 mm)
- **Thimbles (page 67):** 271B (4 3/8 in. / 111 mm), 271C (5 1/2 in. / 140 mm)
- **Drawbar Guides 378 (page 66):** Helps guide drawbar eye into coupling.
- **Wear Gage 14011 (page 66):** To determine hook wear limits.
- **Latch Gage 14026 (page 66):** To determine latch gap limit.

SPECIFICATIONS

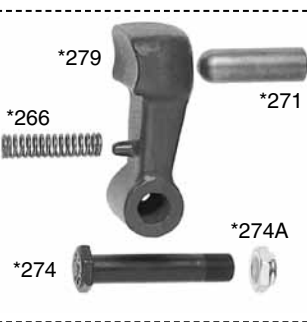
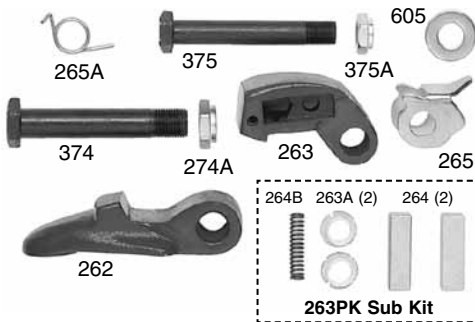
Maximum Gross Trailer Weight:	100,000 lbs.	(45,359 kg)
Maximum Tongue Weight:	20,000 lbs.	(9,071 kg)
Ultimate Latch Capacity:	40,000 lbs.	(18,143 kg)
Maximum Eye X-Section:	1 13/16 in.	(46 mm)
Minimum Eye Opening:	2 3/8 in.	(60 mm)
Unit Weight:	30.5 lbs.	(13.8 kg)

STANDARD INSTALLATION DRAWING



Pushrod length should be 4 in. (102 mm) plus thickness of mounting structure for standard installations as illustrated.

REPLACEMENT PART INFORMATION



60PK Parts Kit Includes:

- | | |
|------------------------|------------------|
| 262: Latch | 375: Bolt |
| 263: Pawl | 375A: Locknut |
| 263A: Bushings (2) | 605: Flat Washer |
| 264: Wedge (2) | *266: Spring |
| 264B: Wedge Spring | *271: Thimble |
| 265: Wedge Safety Lock | *274: Bolt |
| 265A: Torsion Spring | *274A: Locknut |
| 274A: Locknut | *279: Shoe |
| 374: Bolt | |

*Not included in parts kit, available individually.

IMPORTANT GUIDELINES that apply to all Premier Air Adjusted Couplings

- Do not weld on any coupling assembly
- Always use Grade-8 fasteners properly torqued
- Do not apply lubricants to the coupling hook
- Air service chamber must be Type-24 or Type-30 with 90-120 PSI air supply
- Clean & inspect coupling for damage & excessive wear prior to each and every use
- Lubricate all coupling components at a minimum of 90 day intervals
- Do not bind-up (Jackknife) any application as stresses can cause damage to products or components, resulting in failure and detachment of the trailer while in use

