

# 370B Air Adjusted Coupling



This coupling is designed for installations where rear clearance is a problem. Similar to our popular 370, the 370B allows for a bottom mount air can (see illustration below). This coupling must be used with an air service chamber.

## ORDERING INFORMATION

**Coupling Only:**  
- 370B

**Standard Installation Kit:**

- 370BC: 370B Coupling, 503 Bolt Kit, 281C Air Chamber, 271 Thimble

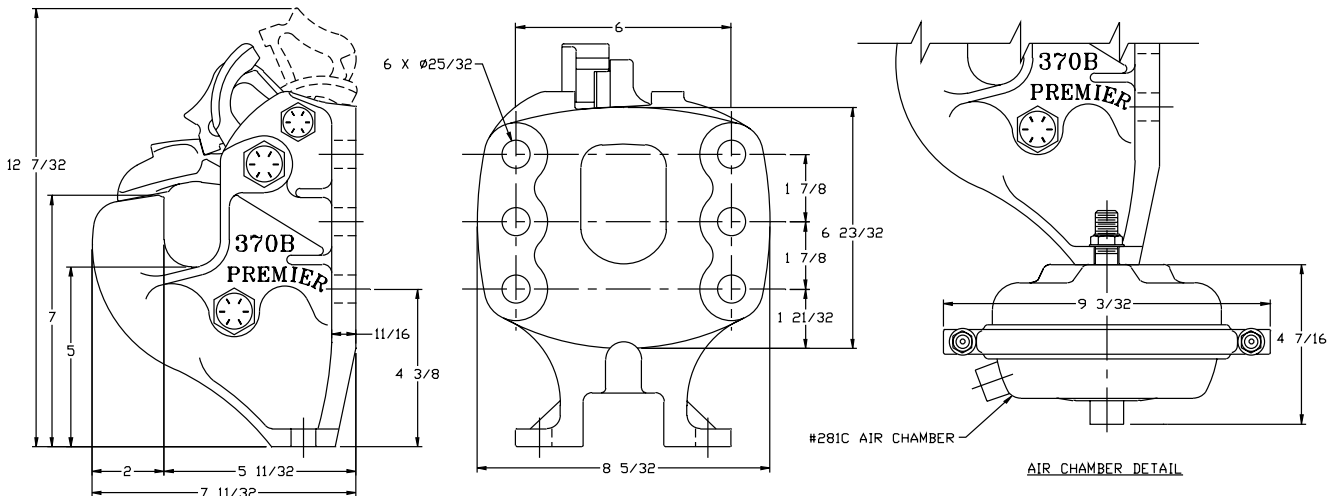
**Optional Accessories:**

- **Air Chamber 282 Type-30 (page 67):** Provides a larger diaphragm for greater shoe force compared to 281C Air Chamber.
- **Thimbles (page 67):** 271B (4 3/8 in. / 111 mm), 271C (5 1/2 in. / 140 mm)
- **Drawbar Guides 378 (page 66):** Helps guide drawbar eye into coupling.
- **Wear Gage 14011 (page 66):** To determine hook wear limits.
- **Latch Gage 14026 (page 66):** To determine latch gap limit.

## SPECIFICATIONS

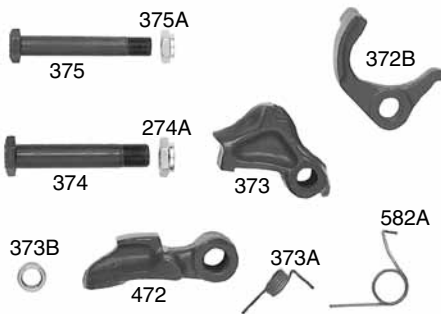
|                                      |             |             |
|--------------------------------------|-------------|-------------|
| <b>Maximum Gross Trailer Weight:</b> | 90,000 lbs. | (40,823 kg) |
| <b>Maximum Tongue Weight:</b>        | 18,000 lbs. | (8,164 kg)  |
| <b>Ultimate Latch Capacity:</b>      | 20,000 lbs. | (9,071 kg)  |
| <b>Maximum Eye X-Section:</b>        | 1 13/16 in. | (46 mm)     |
| <b>Minimum Eye Opening:</b>          | 2 3/8 in.   | (60 mm)     |
| <b>Unit Weight:</b>                  | 31 lbs.     | (14.0 kg)   |

## STANDARD INSTALLATION DRAWING



Pushrod length is 2 3/8 in. (60 mm). Not for use with rear mount air can.

## REPLACEMENT PART INFORMATION



### 370PK Parts Kit Includes:

|                    |                |
|--------------------|----------------|
| 274A: Locknut      | 582A: Spring   |
| 372B: Locking Pawl | *271: Thimble  |
| 373: Pawl          | *274A: Locknut |
| 373A: Spring       | *374: Bolt     |
| 373B: Spacer       | *376: Spring   |
| 374: Bolt          | *379: Shoe     |
| 375: Bolt          |                |
| 375A: Locknut      |                |
| 472: Latch         |                |

\*Not included in parts kit, available individually.

## IMPORTANT GUIDELINES that apply to all Premier Air Adjusted Couplings

- Do not weld on any coupling assembly
- Always use Grade-8 fasteners properly torqued
- Do not apply lubricants to the coupling hook
- Air service chamber must be Type-24 or Type-30 with 90-120 PSI air supply
- Clean & inspect coupling for damage & excessive wear prior to each and every use
- Lubricate all coupling components at a minimum of 90 day intervals
- Do not bind-up (Jackknife) any application as stresses can cause damage to products or components, resulting in failure and detachment of the trailer while in use

