

# 470 Air Adjusted Coupling

## ORDERING INFORMATION

### Coupling Only:

- 470

### Standard Installation Kit:

- **470A:** 470 Coupling, 508 Bolt Kit, 281 Air Chamber, 467 Air Chamber Adapter Bracket, 271 Thimble

### Optional Accessories:

- **Air Chamber 282 Type-30 (page 67):** Provides a larger diaphragm for greater shoe force compared to 281 Air Chamber.
- **Air Chamber Brackets (page 67):** 467H (3/4 in. / 19 mm), 467F (5 1/2 in. / 140 mm)
- **Thimbles (page 67):** 271B (4 3/8 in. / 111 mm), 271C (5 1/2 in. / 140 mm)
- **Drawbar Guides 438 (page 66):** Helps guide drawbar eye into coupling.
- **Wear Gage 14011 (page 66):** To determine hook wear limits.
- **Latch Gage 14026 (page 66):** To determine latch gap limit.

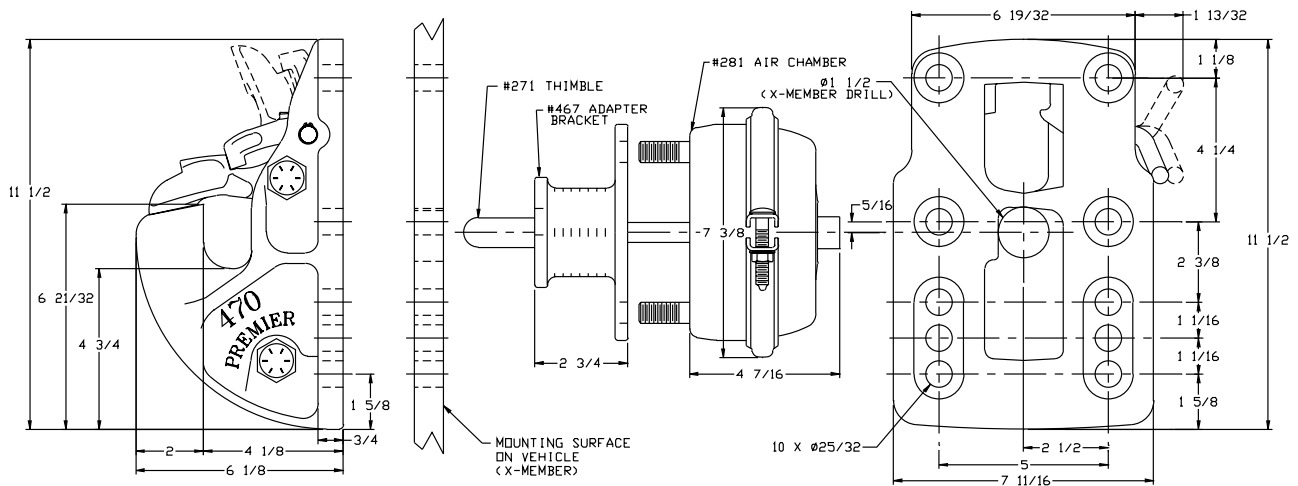


## SPECIFICATIONS

|                                      |             |             |
|--------------------------------------|-------------|-------------|
| <b>Maximum Gross Trailer Weight:</b> | 90,000 lbs. | (40,823 kg) |
| <b>Maximum Tongue Weight:</b>        | 18,000 lbs. | (8,164 kg)  |
| <b>Ultimate Latch Capacity:</b>      | 12,000 lbs. | (5,443 kg)  |
| <b>Maximum Eye X-Section:</b>        | 1 13/16 in. | (46 mm)     |
| <b>Minimum Eye Opening:</b>          | 2 3/8 in.   | (60 mm)     |
| <b>Unit Weight:</b>                  | 33 lbs.     | (14.9 kg)   |

Often used in the agricultural industry as well as tankers the 470 offers a similar latching system as our 270 (page 13) but with a different mounting pattern. This coupling must be used with an air service chamber.

## STANDARD INSTALLATION DRAWING

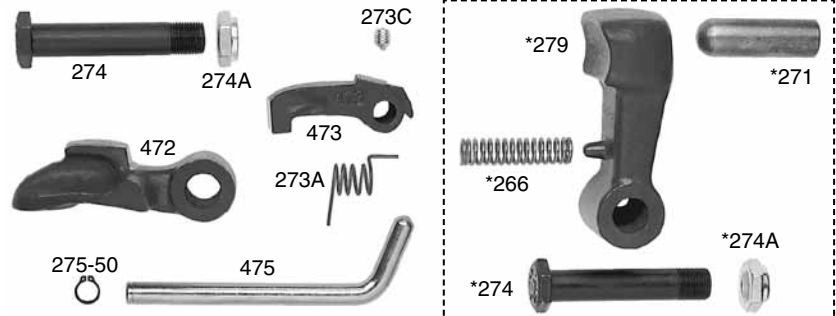


Pushrod length is 3 in. (76 mm) plus thickness of mounting structure for standard installations as illustrated.

## REPLACEMENT PART INFORMATION

### 470PK Parts Kit Includes:

|                   |                |
|-------------------|----------------|
| 273A: Spring      | *266: Spring   |
| 273C: Set Screw   | *271: Thimble  |
| 274: Bolt         | *274: Bolt     |
| 274A: Locknut     | *274A: Locknut |
| 275-50: Snap Ring | *279: Shoe     |
| 475: Pin / Handle |                |
| 472: Latch        |                |
| 473: Pawl         |                |



\*Not included in parts kit, available individually.

## IMPORTANT GUIDELINES that apply to all Premier Air Adjusted Couplings

- Do not weld on any coupling assembly
- Always use Grade-8 fasteners properly torqued
- Do not apply lubricants to the coupling hook
- Air service chamber must be Type-24 or Type-30 with 90-120 PSI air supply
- Clean & inspect coupling for damage & excessive wear prior to each and every use
- Lubricate all coupling components at a minimum of 90 day intervals
- Do not bind-up (Jackknife) any application as stresses can cause damage to products or components, resulting in failure and detachment of the trailer while in use

