

470H Air Adjusted Coupling

ORDERING INFORMATION



Coupling Only:

- 470H

Standard Installation Kit:

- 470HA: 470H Coupling, 508 Bolt Kit, 281 Air Chamber, 467 Air Chamber Adapter Bracket, 271 Thimble

Optional Accessories:

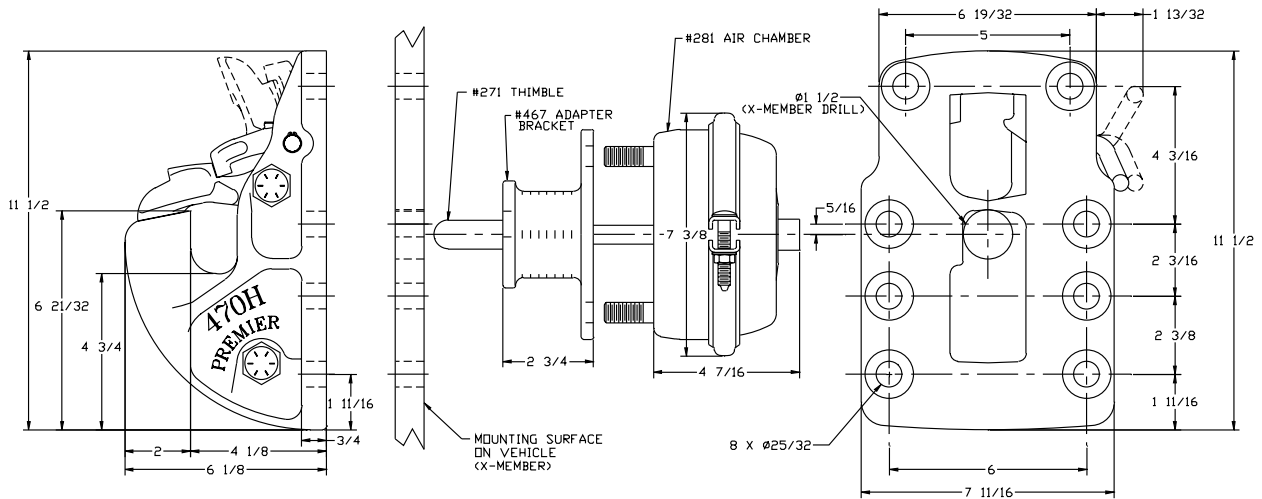
- **Air Chamber 282 Type-30 (page 67):** Provides a larger diaphragm for greater shoe force compared to 281 Air Chamber.
- **Air Chamber Brackets (page 67):** 467H (3/4 in. / 19 mm), 467F (5 1/2 in. / 140 mm)
- **Thimbles (page 67):** 271B (4 3/8 in. / 111 mm), 271C (5 1/2 in. / 140 mm)
- **Drawbar Guides 438 (page 66):** Helps guide drawbar eye into coupling.
- **Wear Gage 14011 (page 66):** To determine hook wear limits.
- **Latch Gage 14026 (page 66):** To determine latch gap limit.

Very similar to our 470 (page 17), the 470H simply offers a different mounting pattern. This coupling must be used with an air service chamber.

SPECIFICATIONS

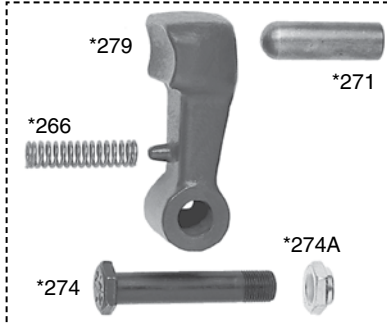
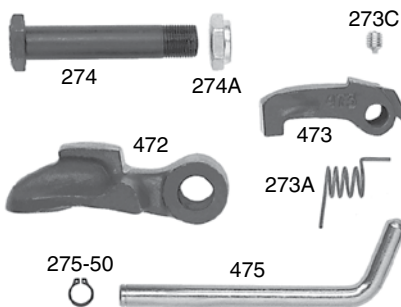
Maximum Gross Trailer Weight:	90,000 lbs.	(40,823 kg)
Maximum Tongue Weight:	18,000 lbs.	(8,164 kg)
Ultimate Latch Capacity:	12,000 lbs.	(5,443 kg)
Maximum Eye X-Section:	1 13/16 in.	(46 mm)
Minimum Eye Opening:	2 3/8 in.	(60 mm)
Unit Weight:	33 lbs.	(14.9 kg)

STANDARD INSTALLATION DRAWING



Pushrod length is 3 in. (76 mm) plus thickness of mounting structure for standard installations as illustrated.

REPLACEMENT PART INFORMATION



470PK Parts Kit Includes:

- | | |
|-------------------|----------------|
| 273A: Spring | *266: Spring |
| 273C: Set Screw | *271: Thimble |
| 274: Bolt | *274: Bolt |
| 274A: Locknut | *274A: Locknut |
| 275-50: Snap Ring | *279: Shoe |
| 475: Pin / Handle | |
| 472: Latch | |
| 473: Pawl | |

*Not included in parts kit, available individually.

IMPORTANT GUIDELINES that apply to all Premier Air Adjusted Couplings

- Do not weld on any coupling assembly
- Always use Grade-8 fasteners properly torqued
- Do not apply lubricants to the coupling hook
- Air service chamber must be Type-24 or Type-30 with 90-120 PSI air supply
- Clean & inspect coupling for damage & excessive wear prior to each and every use
- Lubricate all coupling components at a minimum of 90 day intervals
- Do not bind-up (Jackknife) any application as stresses can cause damage to products or components, resulting in failure and detachment of the trailer while in use

