

880 Air Adjusted Coupling



Similar to our 780 (page 21), Premier's 880 is the brute of couplings. With a maximum G.T.W. of 150,000 lbs., this coupling was designed for the tough stuff. Featuring Premalloy alloy construction for maximum wear, the 880 will provide years of service in even the most abusive environments. This coupling must be used with an air service chamber.

ORDERING INFORMATION

Coupling Only:

- 880

Standard Installation Kit:

- 880A: 880 Coupling, 502 Bolt Kit, 282 Air Chamber, 767 Air Chamber Adapter Bracket, 271 Thimble

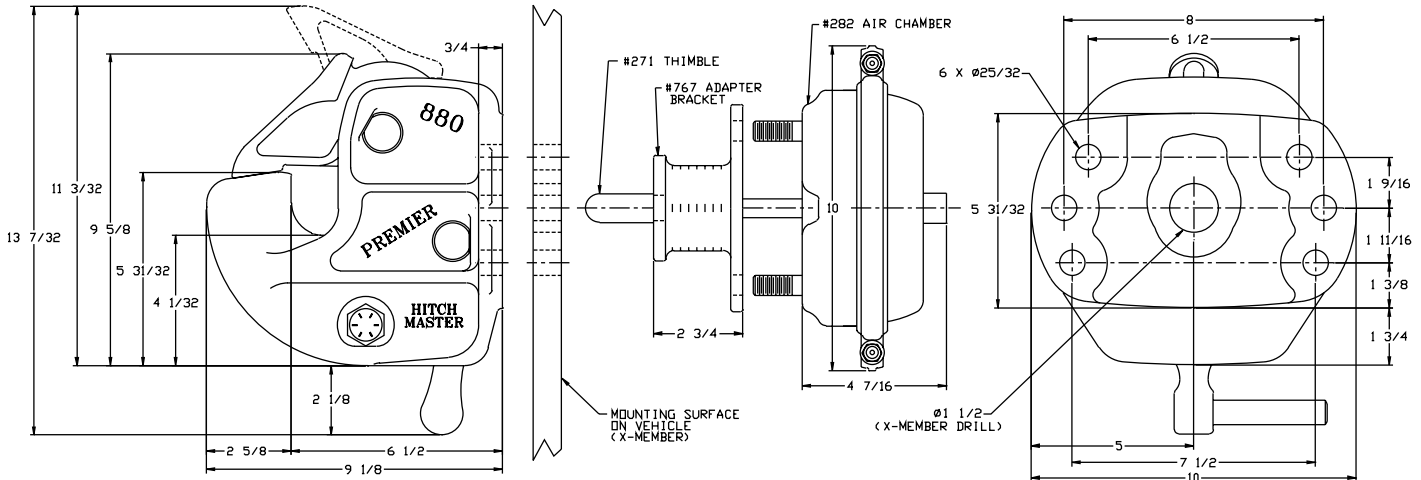
Optional Accessories:

- Air Chamber Brackets (page 67): 767H (3/4 in. / 19 mm)
- Thimbles (page 67): 271B (4 3/8 in. / 111 mm), 271C (5 1/2 in. / 140 mm)
- Wear Gage 14020 (page 66): To determine hook wear limits.
- Latch Gage 14026 (page 66): To determine latch gap limit.

SPECIFICATIONS

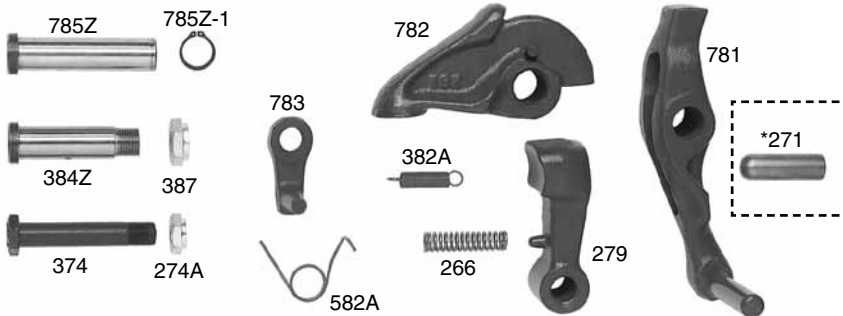
Maximum Gross Trailer Weight:	150,000 lbs.	(68,038 kg)
Maximum Tongue Weight:	30,000 lbs.	(13,607 kg)
Ultimate Latch Capacity:	30,000 lbs.	(13,607 kg)
Maximum Eye X-Section:	1 13/16 in.	(46 mm)
Minimum Eye Opening:	3 in.	(76 mm)
Unit Weight:	50 lbs.	(22.7 kg)

STANDARD INSTALLATION DRAWING



Pushrod length should be 5 3/8 in. (137 mm) plus thickness of mounting structure for standard installations as illustrated.

REPLACEMENT PART INFORMATION



880RK Parts Kit Includes:

- | | |
|---------------|-------------------|
| 266: Spring | 781: Handle |
| *271: Thimble | 782: Latch |
| 274A: Locknut | 783: Lever |
| 279: Shoe | 785Z: Pin |
| 374: Bolt | 785Z-1: Snap Ring |
| 382A: Spring | |
| 384Z: Bolt | |
| 387: Locknut | |
| 582A: Spring | |

*Not included in parts kit, available individually.

IMPORTANT GUIDELINES that apply to all Premier Air Adjusted Couplings

- Do not weld on any coupling assembly
- Always use Grade-8 fasteners properly torqued
- Do not apply lubricants to the coupling hook
- Air service chamber must be Type-24 or Type-30 with 90-120 PSI air supply
- Clean & inspect coupling for damage & excessive wear prior to each and every use
- Lubricate all coupling components at a minimum of 90 day intervals
- Do not bind-up (Jackknife) any application as stresses can cause damage to products or components, resulting in failure and detachment of the trailer while in use

