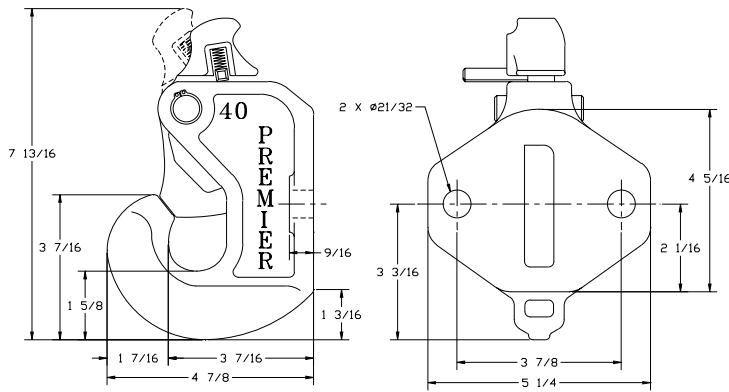


40 & 140 Couplings

40 Coupling



ORDERING INFORMATION

Coupling:
- 40

Optional Accessories:
- Latch Gage 14026 (page 66)

Ideal for light duty applications, the model 40 features a strong, easy to operate and strike-resistant latching system.



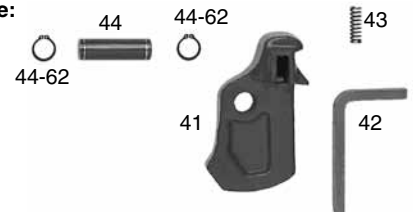
SPECIFICATIONS

Maximum Gross Trailer Weight:	15,000 lbs.	(6,803 kg)
Maximum Tongue Weight:	2,250 lbs.	(1,020 kg)
Ultimate Latch Capacity:	2,250 lbs.	(1,020 kg)
Maximum Eye X-Section:	1 in.	(25 mm)
Minimum Eye Opening:	2 in.	(51 mm)
Unit Weight:	7.5 lbs.	(3.4 kg)

REPLACEMENT PART INFORMATION

Model 40 Parts Available:

- 41: Latch
- 42: Key, Latch
- 43: Spring
- 44: Pin
- 44-62: Snap Ring (2)

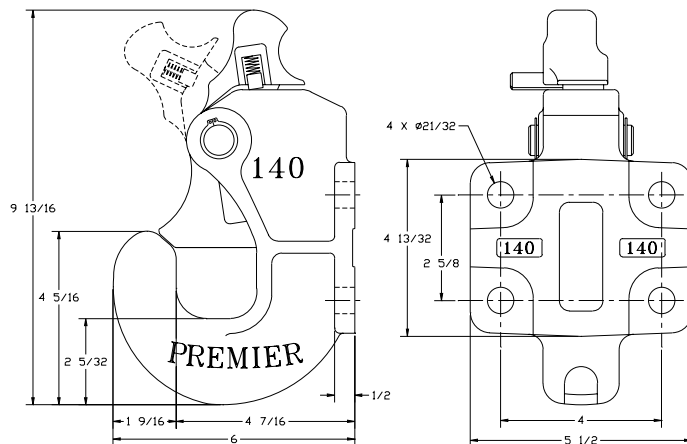


ORDERING INFORMATION

Coupling:
- 40

Optional Accessories:
- Latch Gage 14026 (page 66)

Premier's 140 has been in use by light and medium duty users for many years. Easy to operate, strike-resistant latching and popular mounting pattern make the model 140 ideal for many industries and applications.



SPECIFICATIONS

Maximum Gross Trailer Weight:	30,000 lbs.	(13,607 kg)
Maximum Tongue Weight:	4,500 lbs.	(2,041 kg)
Ultimate Latch Capacity:	2,250 lbs.	(1,020 kg)
Maximum Eye X-Section:	1 1/2 in.	(38 mm)
Minimum Eye Opening:	2 in.	(51 mm)
Unit Weight:	14.5 lbs.	(6.6 kg)

REPLACEMENT PART INFORMATION

Model 140 Parts Available:

- 131: Pin
- 141: Latch
- 142: Key, Latch
- 143: Spring
- 144-75: Snap Ring (2)



IMPORTANT GUIDELINES that apply to all Premier Non-Air Couplings

- Do not weld on any coupling assembly
- Always use Grade-8 fasteners properly torqued
- Do not apply lubricants to the coupling hook
- Clean & inspect coupling for damage & excessive wear prior to each and every use

- Lubricate all coupling components at a minimum of 90 day intervals
- Do not bind-up (Jackknife) any application as stresses can cause damage to products or components, resulting in failure and detachment of the trailer while in use