

130 Coupling



Popular for dolly haul back, the model 130 is ideal for light to medium duty applications. Like many of Premier's couplings, the model 130 features a strong strike-resistant latching system that is easy to operate and maintain.

ORDERING INFORMATION

Coupling:

- 130

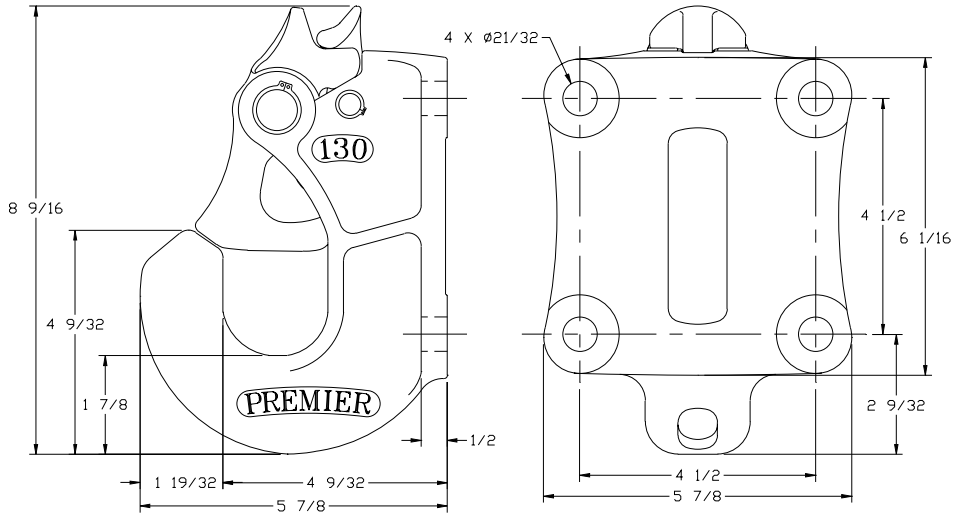
Optional Accessories:

- Latch Gage 14026 (page 66): To determine latch gap limit.

SPECIFICATIONS

Maximum Gross Trailer Weight:	30,000 lbs.	(13,607 kg)
Maximum Tongue Weight:	6,000 lbs.	(2,721 kg)
Ultimate Latch Capacity:	20,000 lbs.	(9,071 kg)
Maximum Eye X-Section:	1 11/16 in.	(43 mm)
Minimum Eye Opening:	2 in.	(51 mm)
Unit Weight:	14.8 lbs.	(6.7 kg)

DRAWING DETAIL



REPLACEMENT PART INFORMATION



Model 130 Parts Available:

- 131: Pin
- 132: Latch
- 132A: Spring
- 132B: Bushing
- 133: Latch Lock
- 133A: Spring
- 134: Pin
- 134B: Bushing
- 144-75: Snap Ring (2)
- 275-50: Snap Ring (2)

IMPORTANT GUIDELINES that apply to all Premier Non-Air Couplings

- Do not weld on any coupling assembly
- Always use Grade-8 fasteners properly torqued
- Do not apply lubricants to the coupling hook
- Clean & inspect coupling for damage & excessive wear prior to each and every use
- Lubricate all coupling components at a minimum of 90 day intervals
- Do not bind-up (Jackknife) any application as stresses can cause damage to products or components, resulting in failure and detachment of the trailer while in use

