

## ORDERING INFORMATION

### Coupling:

- 240

### Optional Accessories:

- **Bolt Kit 159:** Four - 1/2 in. (13 mm) O.D. x 2 in. (51 mm) long bolts, lock washers and nuts.
- **Latch Gage 14026 (page 66):** To determine latch gap limit.

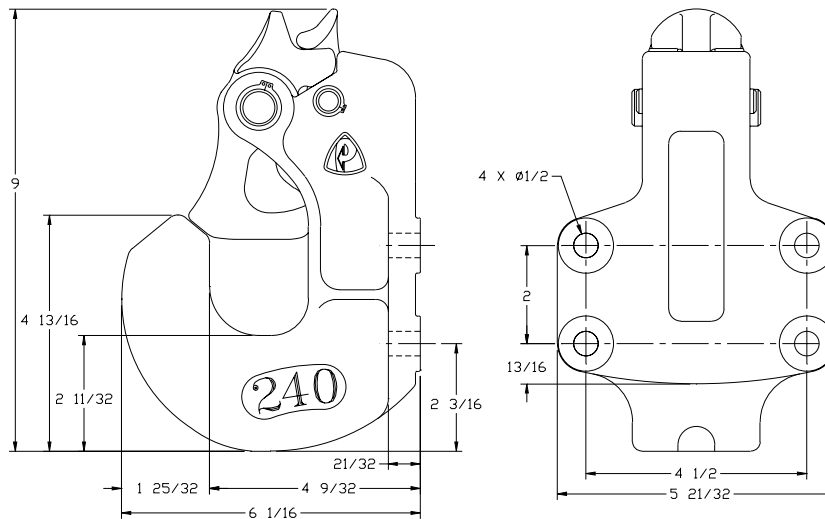


## SPECIFICATIONS

|                                      |             |             |
|--------------------------------------|-------------|-------------|
| <b>Maximum Gross Trailer Weight:</b> | 45,000 lbs. | (20,411 kg) |
| <b>Maximum Tongue Weight:</b>        | 6,000 lbs.  | (2,721 kg)  |
| <b>Ultimate Latch Capacity:</b>      | 20,000 lbs. | (9,071 kg)  |
| <b>Maximum Eye X-Section:</b>        | 1 11/16 in. | (43 mm)     |
| <b>Minimum Eye Opening:</b>          | 2 1/16 in.  | (52 mm)     |
| <b>Unit Weight:</b>                  | 16.1 lbs.   | (7.3 kg)    |

Designed as a direct retrofit to the mounting pattern of Premier's 135NT Swivel Coupling (page 27). The 240 has extra toughness and wear resistance that Premalloy users have come to expect.

## DRAWING DETAIL



## REPLACEMENT PART INFORMATION

### Model 240 Parts Available:

- 131: Pin
- 132: Latch
- 132B: Bushing
- 132A: Spring
- 133: Latch Lock
- 133A: Spring
- 134: Pin
- 134B: Bushing
- 144-75: Snap Ring (2)
- 275-50: Snap Ring (2)



### IMPORTANT GUIDELINES that apply to all Premier Non-Air Couplings

- Do not weld on any coupling assembly
- Always use Grade-8 fasteners properly torqued
- Do not apply lubricants to the coupling hook
- Clean & inspect coupling for damage & excessive wear prior to each and every use
- Lubricate all coupling components at a minimum of 90 day intervals
- Do not bind-up (Jackknife) any application as stresses can cause damage to products or components, resulting in failure and detachment of the trailer while in use