

590L / 590R Drop-Pintle Coupling

ORDERING INFORMATION

Coupling:

- 590L / 590R

Optional Accessories:

- **Bolt Kit 507:** Four - 3/4 in. (19 mm) O.D. x 2 3/4 in. (70 mm) long bolts and locknuts.
- **Wear Gage 14008 (page 66):** To determine hook wear limits.
- **Latch Gage 14026 (page 66):** To determine latch gap limit.



*Hook Only



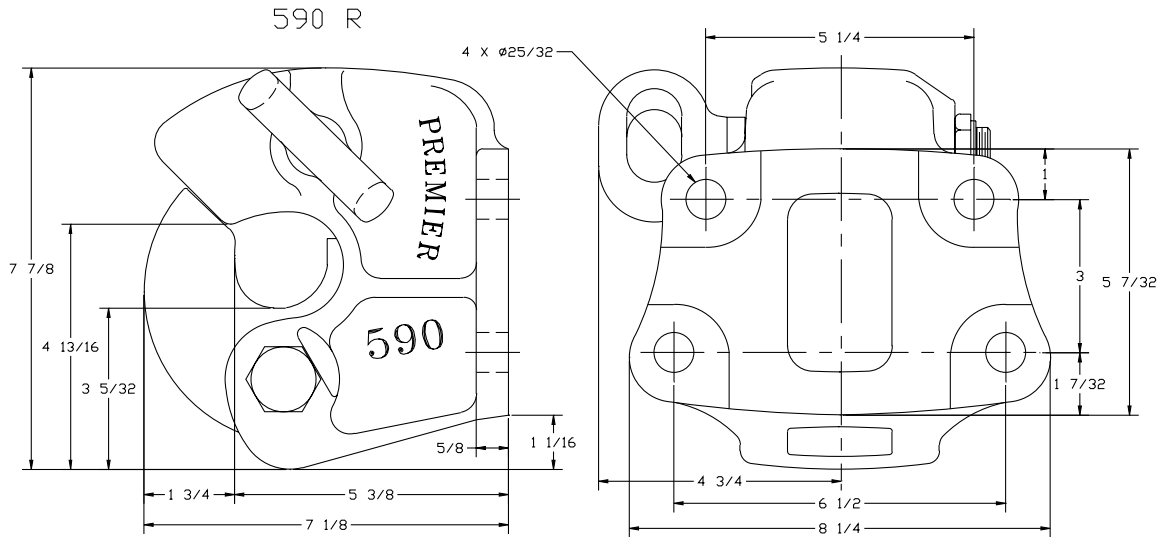
590L

Another of our drop-down style couplings, the model 590 is offered in either left (590L) or right-handed model (590R).

SPECIFICATIONS

Maximum Gross Trailer Weight:	60,000 lbs.	(27,215 kg)
Maximum Tongue Weight:	12,000 lbs.	(5,443 kg)
Upward Vertical Capacity:	30,000 lbs.	(13,607 kg)
Maximum Eye X-Section:	1 11/16 in.	(43 mm)
Minimum Eye Opening:	2 in.	(51 mm)
Unit Weight:	29 lbs.	(13.1 kg)

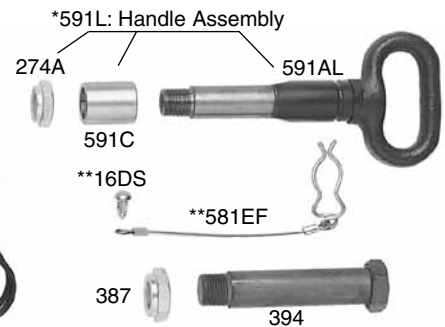
DRAWING DETAIL



REPLACEMENT PART INFORMATION

590LRK / 590RRK Parts Kit Includes:

- | | |
|---|------------------------|
| **16DS: Drive Screw | 591C: Bushing |
| 266: Spring | 592: Hook |
| 274A: Locknut | 595: Spring |
| 387: Locknut | *591L: Handle Assembly |
| 394: Bolt | |
| **581EF: Clip & Cable | |
| 591AL: Handle | |
| 593: Pawl (specify right-593R or left-593L) | |



*Available individually. **Not included in 590R

IMPORTANT GUIDELINES that apply to all Premier Non-Air Couplings

- Do not weld on any coupling assembly
- Always use Grade-8 fasteners properly torqued
- Do not apply lubricants to the coupling hook
- Clean & inspect coupling for damage & excessive wear prior to each and every use
- Lubricate all coupling components at a minimum of 90 day intervals
- Do not bind-up (Jackknife) any application as stresses can cause damage to products or components, resulting in failure and detachment of the trailer while in use

