

# Bolt-On Drawbar Eyes

## 125 Bolt-On Adjustable Eye



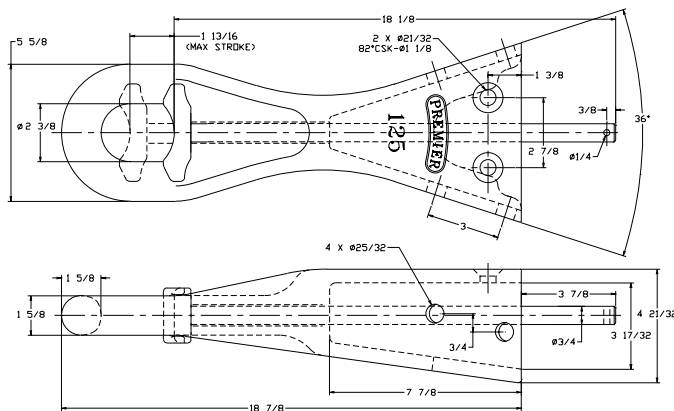
\*\*"Kwik-Loc" Replacement  
\*\*"Kwik-Loc" is a registered trademark of Kwik-Loc Corporation

### Parts Included:

- 411 Shoe
- 125P Pushrod 18 1/8" (460 mm)
- 125 Drawbar Eye

### SPECIFICATIONS

<b>Maximum Gross Trailer Weight:</b>	100,000 lbs.	(45,359 kg)
<b>Maximum Tongue Weight:</b>	15,000 lbs.	(6,803 kg)
<b>Inside Diameter:</b>	2 3/8 in.	(60 mm)
<b>Unit Weight:</b>	40.5 lbs.	(18.4 kg)



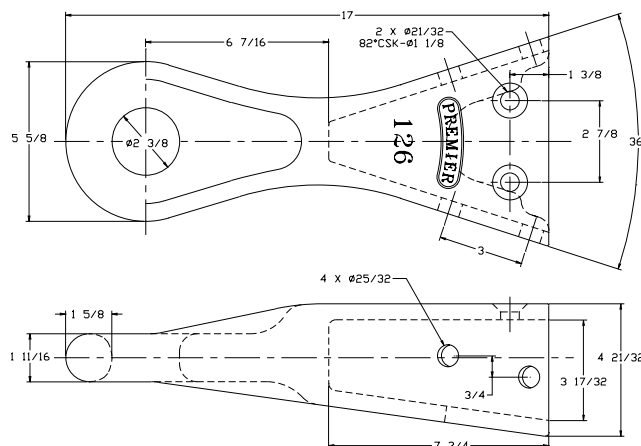
## 126 Bolt-On Eye



\*\*"Kwik-Loc" Replacement  
\*\*"Kwik-Loc" is a registered trademark of Kwik-Loc Corporation

### SPECIFICATIONS

<b>Maximum Gross Trailer Weight:</b>	100,000 lbs.	(45,359 kg)
<b>Maximum Tongue Weight:</b>	15,000 lbs.	(6,803 kg)
<b>Inside Diameter:</b>	2 3/8 in.	(60 mm)
<b>Unit Weight:</b>	34.5 lbs.	(15.6 kg)

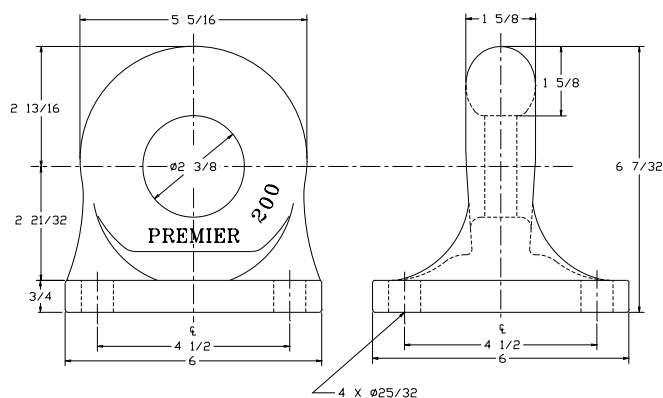


## 200 Bolt-On Eye



### SPECIFICATIONS

<b>Maximum Gross Trailer Weight:</b>	100,000 lbs.	(45,359 kg)
<b>Maximum Tongue Weight:</b>	15,000 lbs.	(6,803 kg)
<b>Inside Diameter:</b>	2 3/8 in.	(60 mm)
<b>Unit Weight:</b>	16.6 lbs.	(7.5 kg)



### IMPORTANT GUIDELINES that apply to all Premier Bolt-On Drawbar Eyes

- Never attempt weld repair of damaged or worn drawbar eyes
- Air adjusted drawbar eyes must be used with an air service chamber or #500 slack adjuster
- Only Grade-8 fasteners properly torqued should be used when attaching bolt-on drawbar eyes
- Do not apply lubricants to the drawbar eye loop
- Clean and inspect drawbar eyes and eye assemblies for damage or excessive wear before each and every use
- Structure to which eye is attached must be of sufficient strength to withstand load rating of eye
- Do not bind-up (Jackknife) any application as stresses can cause damage to products or components, resulting in failure and detachment of the trailer while in use

