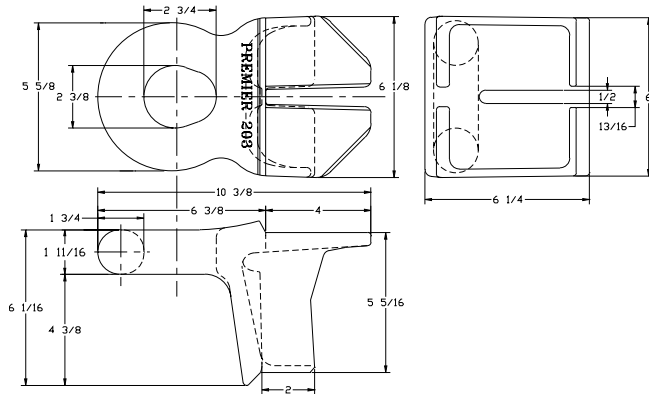


# Weld-On Drawbar Eyes

## 203 Weld-On Eye



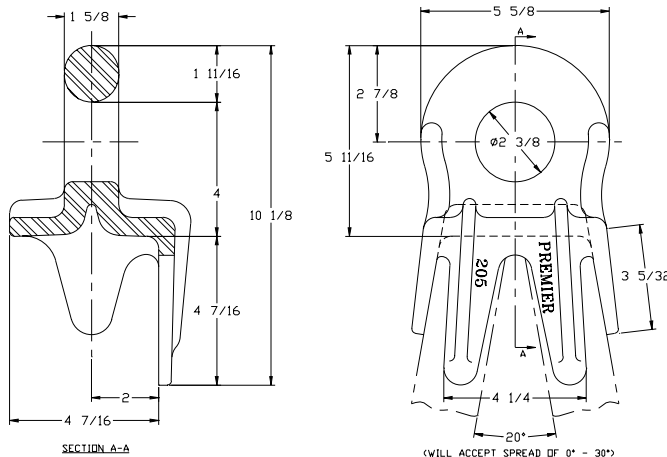
### Designed For:

AISI W6 x 20 wide flange beam (I-beam)

### SPECIFICATIONS

<b>Maximum Gross Trailer Weight:</b>	100,000 lbs.	(45,359 kg)
<b>Maximum Tongue Weight:</b>	15,000 lbs.	(6,803 kg)
<b>Inside Diameter:</b>	2 3/8 in.	(60 mm)
<b>Unit Weight:</b>	21.5 lbs.	(9.8 kg)

## 205 Weld-On Eye



### Designed For:

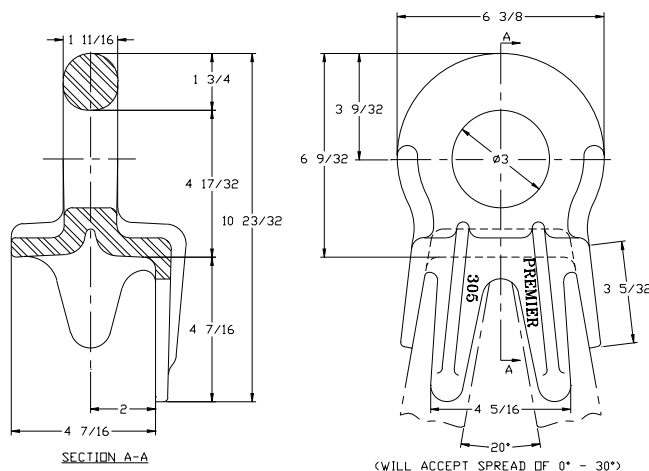
2 in. x 4 in. (51 mm x 102 mm) and  
4 in. x 4 in. (102 mm x 102 mm)  
rectangular tubing.



### SPECIFICATIONS

<b>Maximum Gross Trailer Weight:</b>	100,000 lbs.	(45,359 kg)
<b>Maximum Tongue Weight:</b>	15,000 lbs.	(6,803 kg)
<b>Inside Diameter:</b>	2 3/8 in.	(60 mm)
<b>Unit Weight:</b>	14.5 lbs.	(6.6 kg)

## 305 Weld-On Eye



### Designed For:

2 in. x 4 in. (51 mm x 102 mm) and  
4 in. x 4 in. (102 mm x 102 mm)  
rectangular tubing.



### SPECIFICATIONS

<b>Maximum Gross Trailer Weight:</b>	100,000 lbs.	(45,359 kg)
<b>Maximum Tongue Weight:</b>	15,000 lbs.	(6,803 kg)
<b>Inside Diameter:</b>	3 in.	(76 mm)
<b>Unit Weight:</b>	16.5 lbs.	(7.5 kg)

### IMPORTANT GUIDELINES that apply to all Premier Weld-On Drawbar Eyes

- Never attempt weld repair of damaged or worn drawbar eyes
- Air adjusted drawbar eyes must be used with an air service chamber or #500 slack adjuster
- Clean and inspect drawbar eyes and eye assemblies for damage or excessive wear before each and every use
- Do not apply lubricants to the drawbar eye loop
- Structure to which eye is attached must be of sufficient strength to withstand load rating of eye
- All welds for attaching eye should be done by a certified welder skilled in structural welding
- Do not bind-up (Jackknife) any application as stresses can cause damage to products or components, resulting in failure and detachment of the trailer while in use

