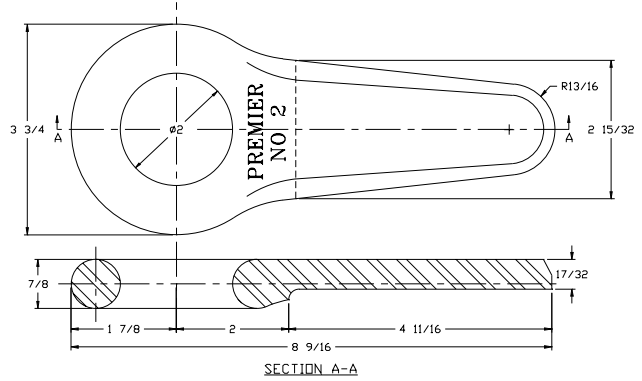


# Weld-On Drawbar Eyes

## 2 Weld-On Eye



### SPECIFICATIONS

**Maximum Gross Trailer Weight:** 12,000 lbs. (5,443 kg)  
**Maximum Tongue Weight:** 1,800 lbs. (816 kg)  
**Inside Diameter:** 2 in. (51 mm)  
**Unit Weight:** 3 lbs. (1.4 kg)

## 3 Weld-On Eye



## 4 Weld-On Eye



## 5 Weld-On Eye



### SPECIFICATIONS

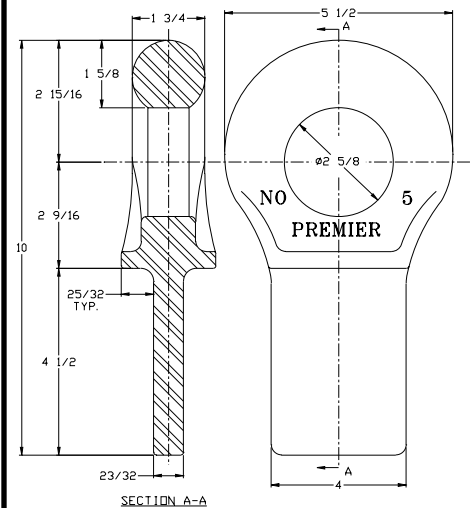
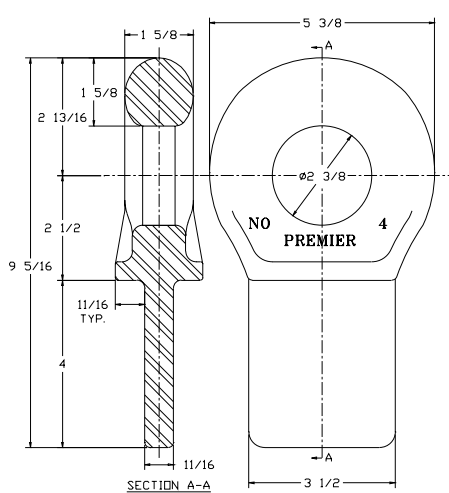
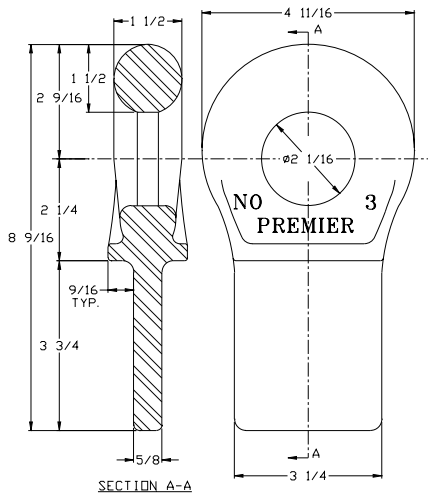
**Max. Gross Trlr Wt:** 70,000 lbs. (31,751 kg)  
**Max. Tongue Wt:** 10,500 lbs. (4,762 kg)  
**Inside Diameter:** 2 1/16 in. (52 mm)  
**Unit Weight:** 7.7 lbs. (3.5 kg)

### SPECIFICATIONS

**Max. Gross Trlr Wt:** 90,000 lbs. (40,823 kg)  
**Max. Tongue Wt:** 13,500 lbs. (6,123 kg)  
**Inside Diameter:** 2 3/8 in. (60 mm)  
**Unit Weight:** 10.5 lbs. (4.8 kg)

### SPECIFICATIONS

**Max. Gross Trlr Wt:** 90,000 lbs. (40,823 kg)  
**Max. Tongue Wt:** 13,500 lbs. (6,123 kg)  
**Inside Diameter:** 2 5/8 in. (67 mm)  
**Unit Weight:** 12 lbs. (5.4 kg)



### IMPORTANT GUIDELINES that apply to all Premier Weld-On Drawbar Eyes

- Never attempt weld repair of damaged or worn drawbar eyes
- Air adjusted drawbar eyes must be used with an air service chamber or #500 slack adjuster
- Clean and inspect drawbar eyes and eye assemblies for damage or excessive wear before each and every use
- Do not apply lubricants to the drawbar eye loop
- Structure to which eye is attached must be of sufficient strength to withstand load rating of eye
- All welds for attaching eye should be done by a certified welder skilled in structural welding
- Do not bind-up (Jackknife) any application as stresses can cause damage to products or components, resulting in failure and detachment of the trailer while in use

