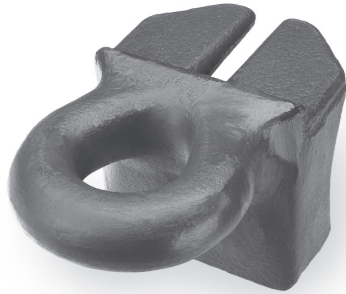


Weld-On Drawbar Eyes

203 Weld-On Eye

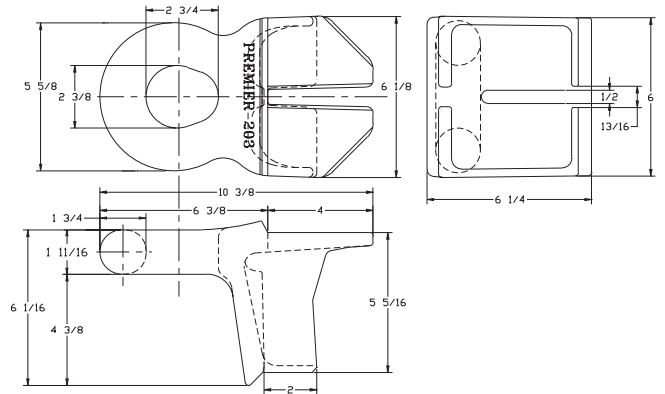


Designed For:

AISI W6 x 20 wide flange beam (I-beam)

SPECIFICATIONS

Maximum Gross Trailer Weight:	100,000 lbs.	(45,359 kg)
Maximum Tongue Weight:	15,000 lbs.	(6,803 kg)
Inside Diameter:	2 3/8 in.	(60 mm)
Unit Weight:	21 lbs.	(9.5 kg)



205 Weld-On Eye

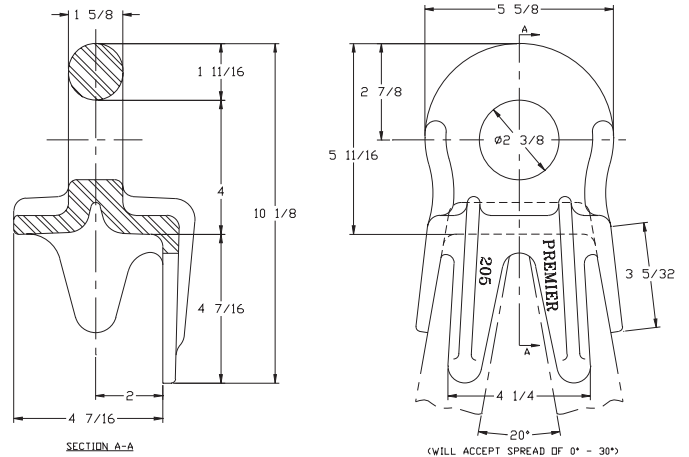
Designed For:

2 in. x 4 in. (51 mm x 102 mm) and
4 in. x 4 in. (102 mm x 102 mm)
rectangular tubing.



SPECIFICATIONS

Maximum Gross Trailer Weight:	100,000 lbs.	(45,359 kg)
Maximum Tongue Weight:	15,000 lbs.	(6,803 kg)
Inside Diameter:	2 3/8 in.	(60 mm)
Unit Weight:	13.9 lbs.	(6.3 kg)



305 Weld-On Eye

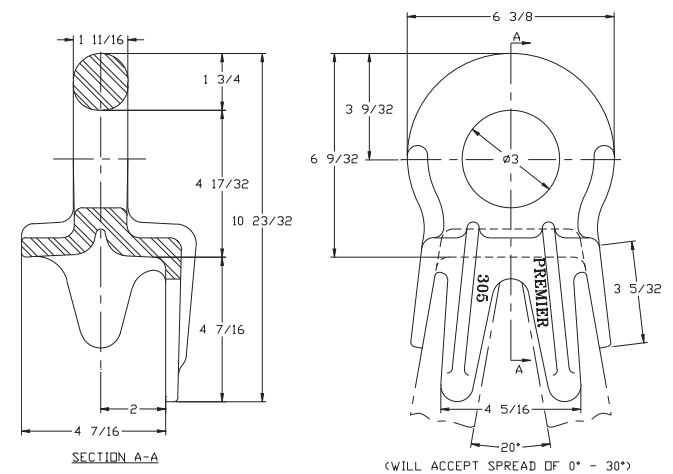
Designed For:

2 in. x 4 in. (51 mm x 102 mm) and
4 in. x 4 in. (102 mm x 102 mm)
rectangular tubing.



SPECIFICATIONS

Maximum Gross Trailer Weight:	100,000 lbs.	(45,359 kg)
Maximum Tongue Weight:	15,000 lbs.	(6,803 kg)
Inside Diameter:	3 in.	(76 mm)
Unit Weight:	15.8 lbs.	(7.2 kg)



IMPORTANT GUIDELINES that apply to all Premier Weld-On Drawbar Eyes

- Never attempt weld repair of damaged or worn drawbar eyes
- Air adjusted drawbar eyes must be used with an air service chamber or #500 slack adjuster
- Clean and inspect drawbar eyes and eye assemblies for damage or excessive wear before each and every use
- Do not apply lubricants to the drawbar eye loop
- Structure to which eye is attached must be of sufficient strength to withstand load rating of eye
- All welds for attaching eye should be done by a certified welder skilled in structural welding
- Do not bind-up (Jackknife) any application as stresses can cause damage to products or components, resulting in failure and detachment of the trailer while in use

