

# Swivel Drawbar Eyes

## 405 Swivel Adjustable Eye



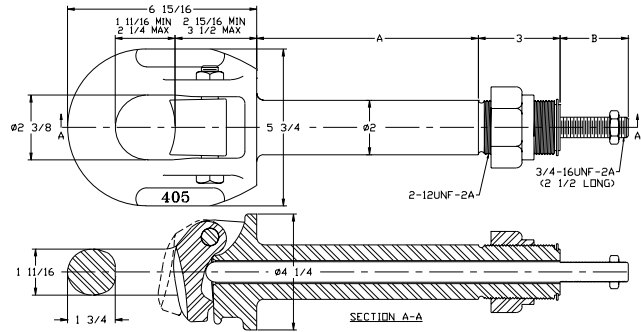
See pages 55 & 56 for Front End Assemblies.

**Parts Included:**

- 400 Shoe
- 375 Bolt
- 375A Locknut
- 416 Locknut
- 525 Jam Nut
- 208 Snap Ring
- Pushrod (see below)

**SPECIFICATIONS**

<b>Maximum Gross Trailer Weight:</b>	90,000 lbs.	(40,823 kg)
<b>Maximum Tongue Weight:</b>	3,700 lbs.	(1,678 kg)
<b>Inside Diameter:</b>	See drawing	
<b>Unit Weight:</b>	See chart at right	



Model	A	B	Weight
405L	9 1/4 in. (235 mm)	3 1/8 in. (79 mm)	27.8 lbs. (12.6 kg)
405S	8 1/8 in. (206 mm)	2 1/2 in. (64 mm)	26.9 lbs. (12.2 kg)
405SE	10 1/8 in. (257 mm)	2 1/4 in. (57 mm)	28.5 lbs. (12.9 kg)

## 405 Pushrod Options

**405 Swivel Drawbar Eye:**

**Standard Pushrod Lengths:**

- 405L: 415A Pushrod - 17 1/4 in. (438 mm), right-hand thread
- 405S: 415 Pushrod - 15 1/2 in. (394 mm), right-hand thread
- 405SE: 415A Pushrod - 17 1/4 in. (438 mm), right-hand thread

**Optional Left-Hand Threaded Pushrods:**

- 415L: 15 1/2 in. (394 mm), left-hand thread
- 415AL: 17 1/4 in. (438 mm), left-hand thread

## 410 Swivel Adjustable Eye



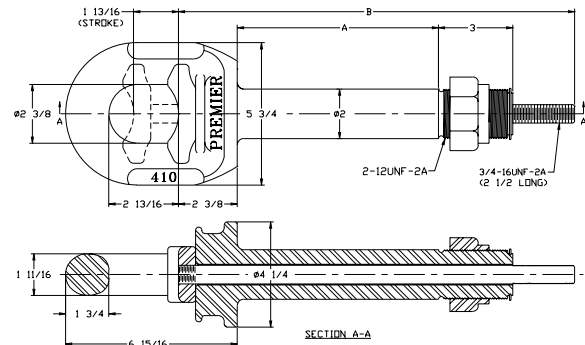
See pages 55 & 56 for Front End Assemblies.

**Parts Included:**

- 411 Shoe
- 416 Locknut
- 208 Snap Ring
- Pushrod (see below)

**SPECIFICATIONS**

<b>Maximum Gross Trailer Weight:</b>	90,000 lbs.	(40,823 kg)
<b>Maximum Tongue Weight:</b>	3,700 lbs.	(1,678 kg)
<b>Inside Diameter:</b>	See drawing	
<b>Unit Weight:</b>	See chart at right	



Model	A	B	Weight
410L	9 1/4 in. (235 mm)	17 3/4 in. (451 mm)	25.8 lbs. (11.7 kg)
410S	8 1/8 in. (206 mm)	16 in. (406 mm)	24.6 lbs. (11.2 kg)
410SE	10 1/8 in. (257 mm)	17 3/4 in. (451 mm)	26.6 lbs. (12.1 kg)

## 410 Pushrod Options

**410 Swivel Drawbar Eye:**

**Standard Pushrod Lengths:**

- 410L: 413A Pushrod - 17 3/4 in. (451 mm), right-hand thread
- 410S: 413 Pushrod - 16 in. (406 mm), right-hand thread
- 410SE: 413A Pushrod - 17 3/4 in. (451 mm), right-hand thread

**Optional Left-Hand Threaded Pushrods:**

- 413AL: 17 3/4 in. (451 mm), left-hand thread
- 413L: 16 in. (406 mm), left-hand thread

**IMPORTANT GUIDELINES that apply to all Premier Swivel Drawbar Eyes**

- Never attempt weld repair of damaged or worn drawbar eyes
- Never attempt to use a swivel-type drawbar eye with a swivel-type coupling
- Air adjusted drawbar eyes must be used with an air service chamber or #500 slack adjuster
- Do not apply lubricants to the drawbar eye loop
- Clean and inspect drawbar eyes and eye assemblies for damage or excessive wear before each and every use
- Assembly to which eye is attached must be of sufficient strength to withstand load rating of eye
- Do not bind-up (Jackknife) any application as stresses can cause damage to products or components, resulting in failure and detachment of the trailer while in use

