

Front End Assemblies

536, 546 & 556 Front End Assemblies



536 HOUSING SPECIFICATIONS

Designed For Use With: 207K, 207S, 307K, 307S, 405S & 410S Swivel Drawbar Eyes Only

Bushing Options:

437 (Rubber), 437A (Poly) or *437AK (Poly):

Inside Diameter: 2 in. (51 mm) or *2 1/4 in. (57 mm)

Outside Diameter: 4 1/4 in. (108 mm)

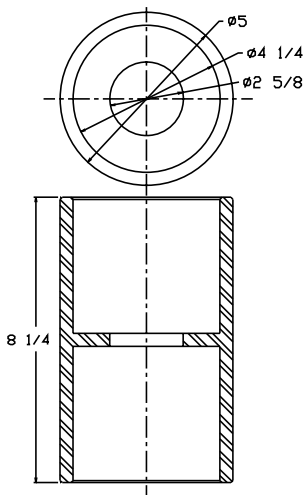
Length: 4 1/2 in. (114 mm)

Ordering Information:

536A: 536 Housing, 437 Rubber Bushings & 349 Washer

536B: 536 Housing, 437A Poly Bushings & 349 Washer

536BK: 536 Housing, 437AK Poly Bushings & 349SE-SPL Washer
* (used with 207K and 307K only)



546 HOUSING SPECIFICATIONS

Designed For Use With: 207SE, 307SE, 405SE, 407SE & 410SE Swivel Drawbar Eyes Only

Bushing Options:

P205 (Rubber) or P205A (Poly):

Inside Diameter: 2 in. (51 mm)

Outside Diameter: 4 3/4 in. (121 mm)

Length: 5 3/16 in. (132 mm)

R205 (Rubber):

Inside Diameter: 2 1/2 in. (64 mm)

Outside Diameter: 4 3/4 in. (121 mm)

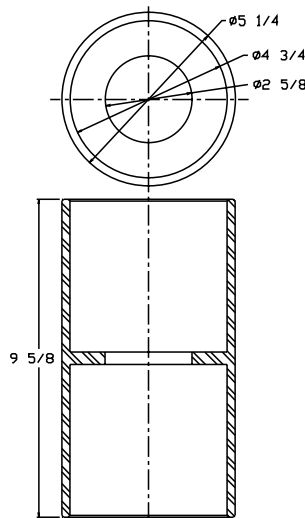
Length: 5 3/16 in. (132 mm)

Ordering Information:

546A: 546 Housing, P205 Rubber Bushings & 349SE Washer

546B: 546 Housing, P205A Poly Bushings & 349SE Washer

546R: 546 Housing, R205 Rubber Bushings & 407W Washer
(used with 407SE only)



556 HOUSING SPECIFICATIONS

Designed For Use With: 207SE, 307SE, 405SE, 407SE & 410SE Swivel Drawbar Eyes Only

Bushing Options:

P205 (Rubber) or P205A (Poly):

Inside Diameter: 2 in. (51 mm)

Outside Diameter: 4 3/4 in. (121 mm)

Length: 5 3/16 in. (132 mm)

R205 (Rubber):

Inside Diameter: 2 1/2 in. (64 mm)

Outside Diameter: 4 3/4 in. (121 mm)

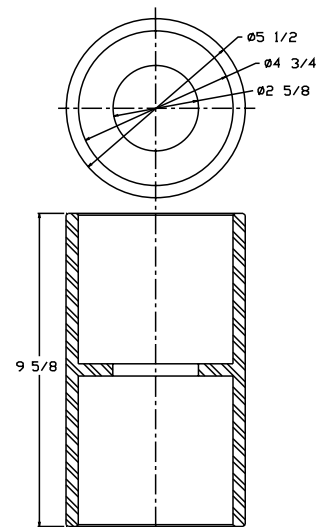
Length: 5 3/16 in. (132 mm)

Ordering Information:

556A: 556 Housing, P205 Rubber Bushing & 349SE Washer

556B: 556 Housing, P205A Poly Bushing & 349SE Washer

556R: 556 Housing, R205 Rubber Bushings & 407W Washer
(used with 407SE only)



IMPORTANT GUIDELINES that apply to all Premier Front End Assemblies

- Never attempt weld repair of damaged or worn drawbar eyes or front end assemblies
- Clean and inspect drawbar eyes and eye assemblies for damage or excessive wear before each and every use
- All welds should be performed by a certified welder skilled in structural welding practices
- Drawbar structure as well as welds attaching front end assembly to drawbar must be of sufficient strength to withstand the load rating of the drawbar eye
- Do not bind-up (Jackknife) any application as stresses can cause damage to products or components, resulting in failure and detachment of the trailer while in use

