






# 800 Utility Jack

Premier's 800 Utility Jack was designed to accommodate light to medium duty applications.

-  Quick action, spring-activated, folding handle that seats in a positive position for travel. This keeps the handle short, compact, and out of the way.
-  Strong, precision fit square tubing helps reduce penetration of outside contaminants.
-  Tube support collar on outside tube for added strength.
-  Oil cup for convenient lubrication of power screw.
-  Custom mounting options allow mounting plate to be factory welded anywhere on the outside tube, or shipped loose for customer installation.

**Capacity:** 2,500 lbs. (1,134 kg) operational, 5,000 lbs. (2,268 kg) static.  
Refer to caster chart (below) for caster limitations.

**Models Available:**

Model	Travel	Overall Height*	Weight (w/o caster)
800P-15	15 in. (381 mm)	23 1/8 in. (587 mm)	19.5 lbs. (8.9 kg)

\*(Retracted, Includes handle.)

**Caster Options:** 620, 623

**Optional Accessories:**





**688 Swivel Mount:** Helps lift jack up and out of harms way when traveling (see page 62).



Model 800P-15-829

## Caster Options

Jack assemblies are to be fully retracted during highway operation. Capacity ratings apply only to manual operation at less than 5 mph (8 kph). Caster assemblies determine actual capacity of jack.

Caster Type	Model	Capacity	Overall Height	Wheel Size	Unit Weight
<b>Steel</b> 	620	1,200 lbs. (544.3 kg)	7 1/4 in. (184 mm)	6 in. (152 mm)	10 lbs. (4.5 kg)
	637	1,200 lbs. (544.3 kg)	7 1/4 in. (184 mm)	6 in. (152 mm)	11 lbs. (5.0 kg)
	745*	1,400 lbs. (636.4 kg)	10 1/8 in. (257 mm)	8 in. (203 mm)	16 lbs. (7.3 kg)
*Not recommended for 600 Series Jiffy Jacks					
<b>Molden Rubber</b> 	623	800 lbs. (362.9 kg)	7 1/4 in. (184 mm)	6 in. (152 mm)	6 lbs. (2.7 kg)
	638	800 lbs. (362.9 kg)	7 1/4 in. (184 mm)	6 in. (152 mm)	7 lbs. (3.2 kg)
	746	800 lbs. (362.9 kg)	10 1/8 in. (257 mm)	8 in. (203 mm)	11 lbs. (5.0 kg)
<b>Pneumatic</b> 	720	390 lbs. (176.9 kg)	13 in. (330 mm)	10 in. (254 mm)	14 lbs. (6.4 kg)
	732*	445 lbs. (201.8 kg)	13 5/8 in. (346 mm)	12 in. (305 mm)	16 lbs. (7.3 kg)
	740*	710 lbs. (322.0 kg)	18 in. (457 mm)	14 in. (356 mm)	30 lbs. (13.6 kg)
*Not recommended for 600 Series Jiffy Jacks					
<b>Sand Shoe</b> (standard) 	729	10,000 lbs. (4,535.9 kg)	-	6 in. (152 mm)	1.5 lbs. (0.7 kg)

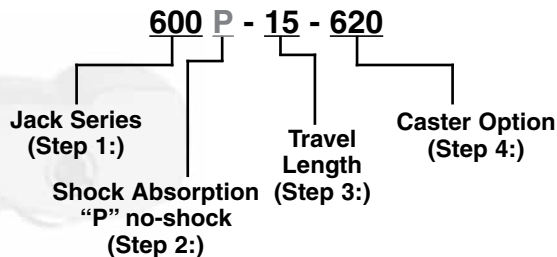
**IMPORTANT GUIDELINES that apply to all Premier Jacks**

- Never operate jack on uneven ground or where there is a chance of the lifted load shifting
- Never place more of a load on jack or caster which is greater than the lowest rated capacity
- Lubricate jack and check jack and caster assembly for damage or worn components frequently
- Do not bind-up (Jackknife) any application as stresses can cause damage to products or components, resulting in failure and detachment of the trailer while in use

# Jack Selection Guide

## Determining and Ordering Your Premier Jack:

Following these four steps (shown at right), will assist you in constructing a jack part number. If you should have any questions regarding ordering or installing a Premier Jack, please call our knowledgeable sales staff for assistance.



## Step 1: Determine The Jack Best Suited to Your Needs

Review the features of Premier's 600, 700 and 800 series jacks to determine which line best suits your application.



## Step 2: Shock Absorption

Premier's 600 Jiffy Jack and 700 Standard Jack both offer an optional shock system that reduces the potential for jack damage due to sudden load drops. If this feature is **not** desired, indicate a "P" after the Jack model number. Indicate as follows:

- 600 - 15 - 620 to include this feature, or
- 600P - 15 - 620 to decline this feature.



## Step 3: Specify Travel Length of Stroke

The 600 Series Jack offers various travel lengths. Determine your required travel length and indicate as follows:

- 600 - 15 - 620 for a 15 in. (381 mm) travel length jack (please indicate in inches).



## Step 4: Select a Caster Suited to Your Needs

If a caster is desired, review the Caster Chart (page 63) to determine which caster fits your needs. Indicate as follows:

- 600 - 15 - 620 would be a 600 Jack with optional shock absorption and the model 620 steel caster rated at 1,200 lbs. (544.3 kg).



### IMPORTANT GUIDELINES that apply to all Premier Jacks

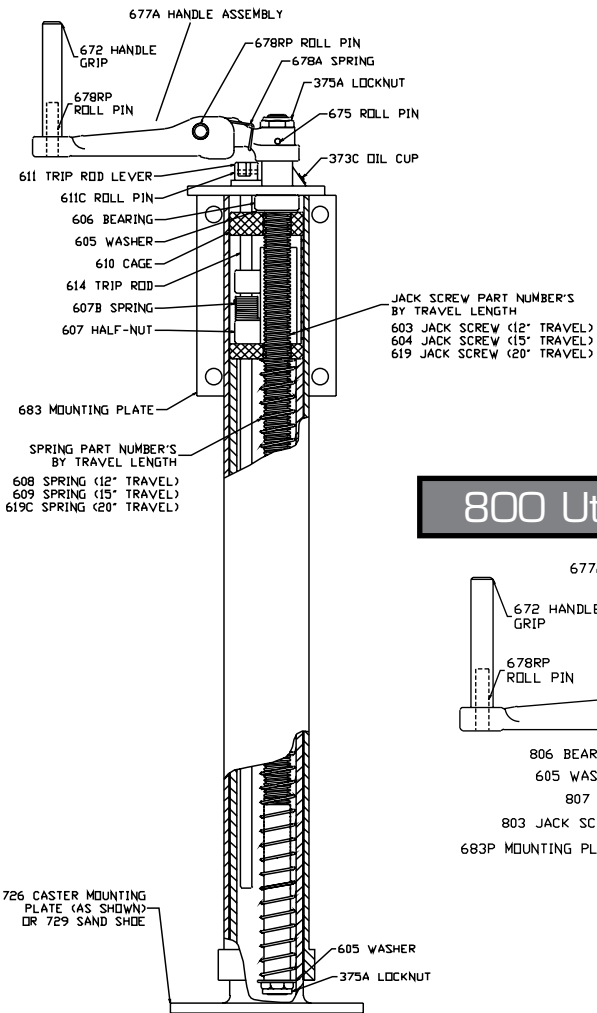
- Never operate jack on uneven ground or where there is a chance of the lifted load shifting
- Never place more of a load on jack or caster which is greater than the lowest rated capacity
- Lubricate jack and check jack and caster assembly for damage or worn components frequently
- Do not bind-up (Jackknife) any application as stresses can cause damage to products or components, resulting in failure and detachment of the trailer while in use



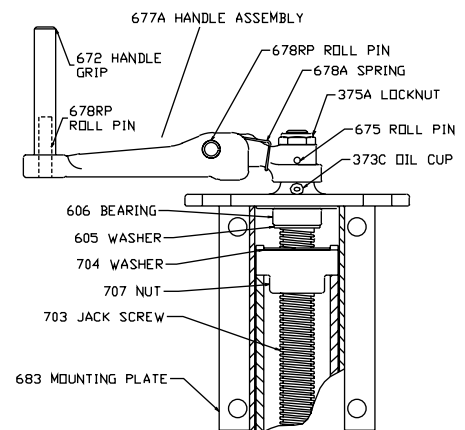
# Dolly and Multi-Use Jacks

The Jack Replacement Parts illustrated should accommodate most repair requirements. Complete inner and outer tube assemblies are also available. Contact Premier for more information.

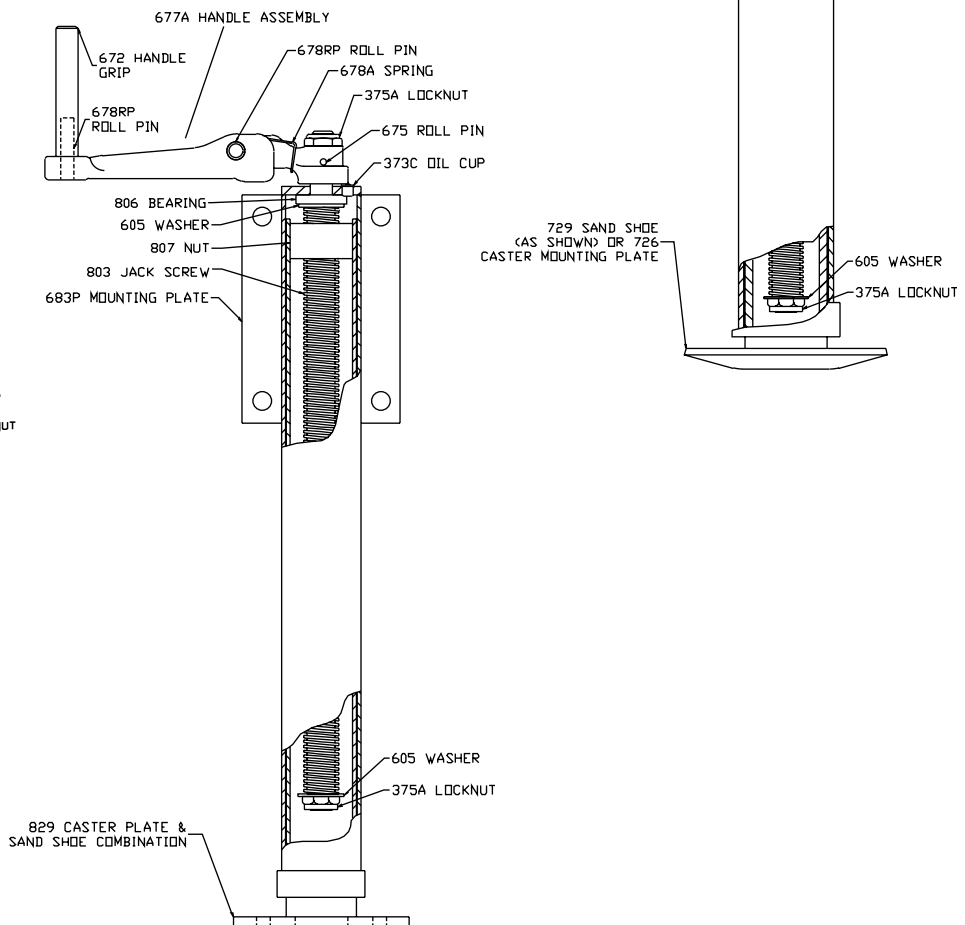
## 600 Jiffy Jack Parts



## 700 Custom Jack Parts



## 800 Utility Jack Parts



### IMPORTANT GUIDELINES that apply to all Premier Jacks

- Never operate jack on uneven ground or where there is a chance of the lifted load shifting
- Never place more of a load on jack or caster which is greater than the lowest rated capacity
- Lubricate jack and check jack and caster assembly for damage or worn components frequently
- Do not bind-up (Jackknife) any application as stresses can cause damage to products or components, resulting in failure and detachment of the trailer while in use

