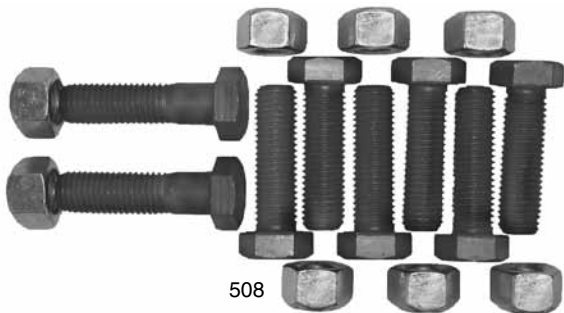


Accessories

Bolt Kits



These individually packaged bolt kits make the hardware selection for your coupling and/or drawbar eye fast and easy.

All kits (except 159**) use coarse threaded Grade-8 fasteners and Grade-C crimp style locknuts for a strong and secure coupling or drawbar eye mounting system.

SPECIFICATIONS

Part #	For use with:	Includes:	Maximum Mounting Structure Thickness:
501:	270, 2200, Saf-Tite 100	Bolts (2) 2 1/2 in. (2) 2 3/4 in., Locknuts (4)	1/2 in. (13 mm)
501SPL*:	2200, Saf-Tite 100	Bolts (4) 2 1/2 in., Locknuts (4)	1/2 in. (13 mm)
502:	360, 370, 780, 880, 2300	Bolts (4) 2 1/2 in. (2) 2 3/4 in., Locknuts (6)	1/2 in. (13 mm)
503:	127, 127F, 370B, 570, 580J, 2300B	Bolts (6) 2 1/2 in., Locknuts (6)	1/2 in. (13 mm)
504:	570	Bolts (6) 2 in., Locknuts (6)	1/2 in. (13 mm)
505:	770	Bolts (5) 2 1/2 in. (2) 2 3/4 in., Locknuts (7)	1/2 in. (13 mm)
507:	200, 200L, 290, 290C, 300, 480, 580, 590, 690, 690T, 890, 890C	Bolts (4) 2 3/4 in., Locknuts (4)	1/2 in. (13 mm)
508:	470, 470H, 2400, 2400H, Saf-Tite100-4	Bolts (6) 2 1/2 in. (2) 2 3/4 in., Locknuts (8)	1/2 in. (13 mm)
159**:	150, 160, 240	Bolts (4) 2 in., Lock washer (4), Hex nut (4)	3/4 in. (19 mm)

* For use with Non-Air applications.

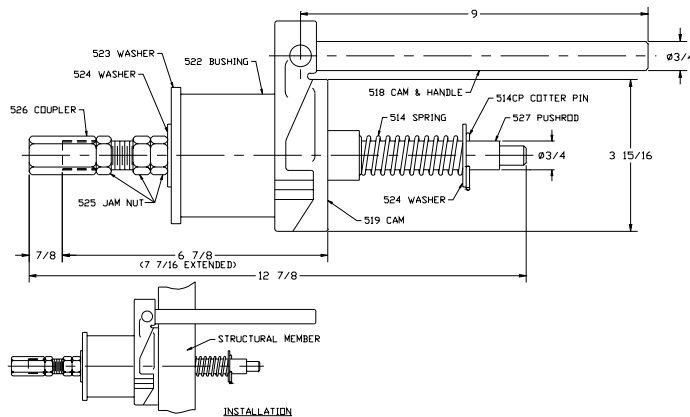
** 159 Kit has fine threads, uses lock washers and standard nuts.

500 Mechanical Slack Adjuster



A complete mechanical slack adjustment device intended for use with any Premier slack adjusting drawbar eye. The 500 is designed to be used in place of 281 or 282 air chambers. No plumbing of air lines and simple operation make for an easy install and minimal maintenance.

Unit weight 9.3 lbs. (4.2 kg).



IMPORTANT GUIDELINES that apply to all Premier Accessories

- Always check parts for proper operation prior to placing in service
- Clean and lubricate accessories (where applicable) frequently
- Clean and inspect accessories for damage or excessive wear before each and every use
- Never attempt weld repair or other repair to damaged or defective

Premier accessories

- Only use Premier manufactured or authorized accessories or parts in or on Premier products
- Do not bind-up (Jackknife) any application as stresses can cause damage to products or components, resulting in failure and detachment of the trailer while in use

