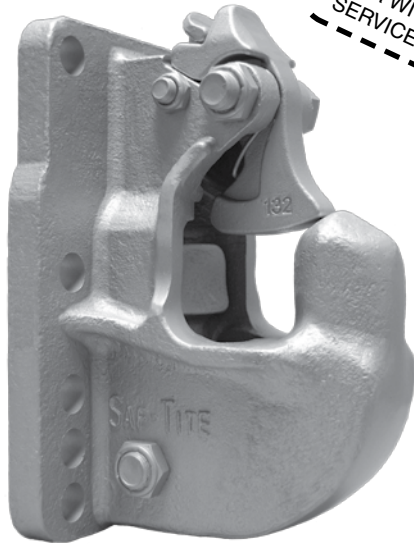


Saf-Tite 100-4 Air Adjusted Coupling



OPERATION WITH
OR WITHOUT AIR
SERVICE CHAMBER

The Saf-Tite 100-4 has the same popular mounting bolt pattern as our 2400 & 470 models (pages 11 & 17).

ORDERING INFORMATION

Coupling Only:

- 100-4

Standard Installation Kit:

- 100-4A: 100-4 Coupling, 508 Bolt Kit, 281 Air Chamber, 467 Air Chamber Adapter Bracket, 271 Thimble

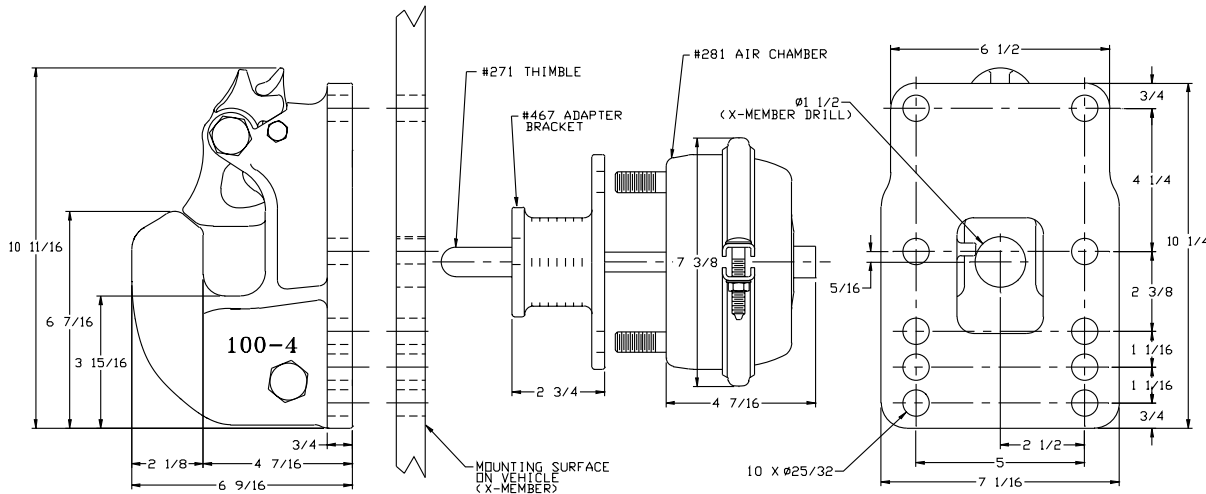
Optional Accessories:

- Air Chamber 282 Type-30 (page 67): Provides a larger diaphragm for greater shoe force compared to 281 Air Chamber.
- Air Chamber Brackets (page 67): 467H (3/4 in. / 19 mm), 467F (5 1/2 in. / 140 mm)
- Thimbles (page 67): 271B (4 3/8 in. / 111 mm), 271C (5 1/2 in. / 140 mm)
- Wear Gage 14014 (page 66): To determine hook wear limits.
- Latch Gage 14026 (page 66): To determine latch gap limit.

SPECIFICATIONS

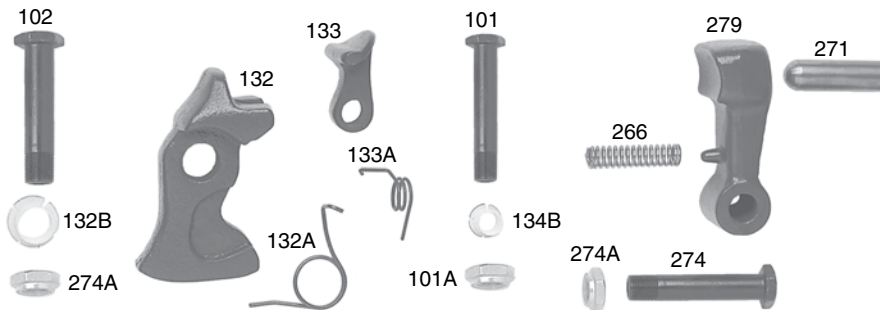
Maximum Gross Trailer Weight:	100,000 lbs.	(45,359 kg)
Maximum Tongue Weight:	20,000 lbs.	(9,071 kg)
Ultimate Latch Capacity:	20,000 lbs.	(9,071 kg)
Maximum Eye X-Section:	1 13/16 in.	(46 mm)
Minimum Eye Opening:	2 3/8 in.	(60 mm)
Unit Weight:	34 lbs.	(15.5 kg)

STANDARD INSTALLATION DRAWING



Pushrod length is 3 1/8 in. (79 mm) plus thickness of mounting structure for standard installations as illustrated.

REPLACEMENT PART INFORMATION



101: Bolt	266: Spring
101A: Lock Nut	271: Thimble
102: Bolt	274: Bolt
132: Latch	274A: Locknut (2)
132A: Spring	279: Shoe
132B: Bushing	
133: Latch Lock	
133A: Spring	
134B: Bushing	

IMPORTANT GUIDELINES that apply to all Premier Air Adjusted Couplings

- Do not weld on any coupling assembly
- Always use Grade-8 fasteners properly torqued
- Do not apply lubricants to the coupling hook
- Air service chamber must be Type-24 or Type-30 with 90-120 PSI air supply
- Clean & inspect coupling for damage & excessive wear prior to each and every use
- Lubricate all coupling components at a minimum of 90 day intervals
- Do not bind-up (Jackknife) any application as stresses can cause damage to products or components, resulting in failure and detachment of the trailer while in use

