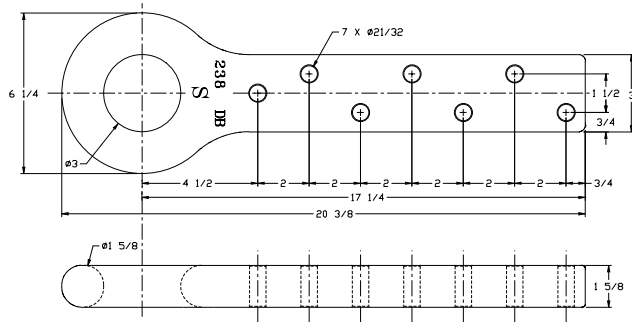


Saf-Tite Bolt-On Drawbar Eyes

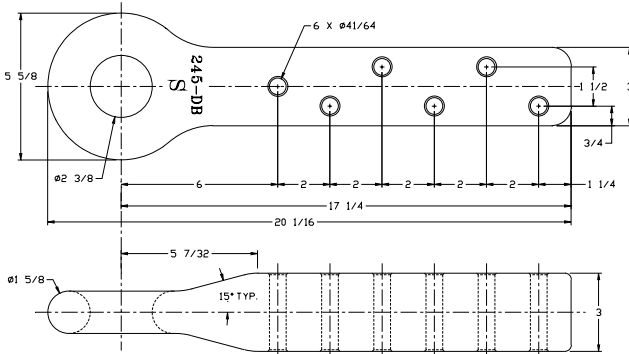
Saf-Tite 238DB



SPECIFICATIONS

Maximum Gross Trailer Weight:	90,000 lbs.	(40,823 kg)
Maximum Tongue Weight:	8,000 lbs.	(3,628 kg)
Inside Diameter:	3 in.	(76 mm)
Unit Weight:	27.8 lbs.	(12.6 kg)

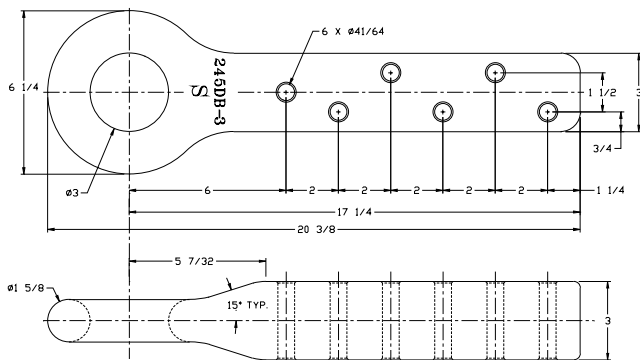
Saf-Tite 245DB



SPECIFICATIONS

Maximum Gross Trailer Weight:	90,000 lbs.	(40,823 kg)
Maximum Tongue Weight:	8,000 lbs.	(3,628 kg)
Inside Diameter:	2 3/8 in.	(60 mm)
Unit Weight:	41.6 lbs.	(18.9 kg)

Saf-Tite 245DB-3



SPECIFICATIONS

Maximum Gross Trailer Weight:	90,000 lbs.	(40,823 kg)
Maximum Tongue Weight:	8,000 lbs.	(3,628 kg)
Inside Diameter:	3 in.	(76 mm)
Unit Weight:	42 lbs.	(19.1 kg)

IMPORTANT GUIDELINES that apply to all Premier Bolt-On Drawbar Eyes

- Never attempt weld repair of damaged or worn drawbar eyes
- Air adjusted drawbar eyes must be used with an air service chamber or #500 slack adjuster
- Only Grade-8 fasteners properly torqued should be used when attaching bolt-on drawbar eyes
- Do not apply lubricants to the drawbar eye loop
- Clean and inspect drawbar eyes and eye assemblies for damage or excessive wear frequently
- Structure to which eye is attached must be of sufficient strength to withstand load rating of eye
- Do not bind-up (Jackknife) any application as stresses can cause damage to products or components, resulting in failure and detachment of the trailer while in use

