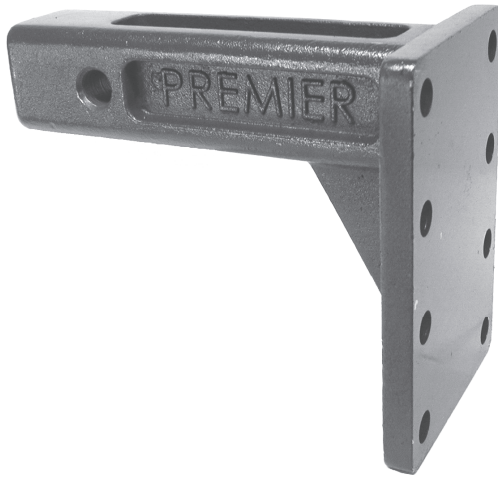


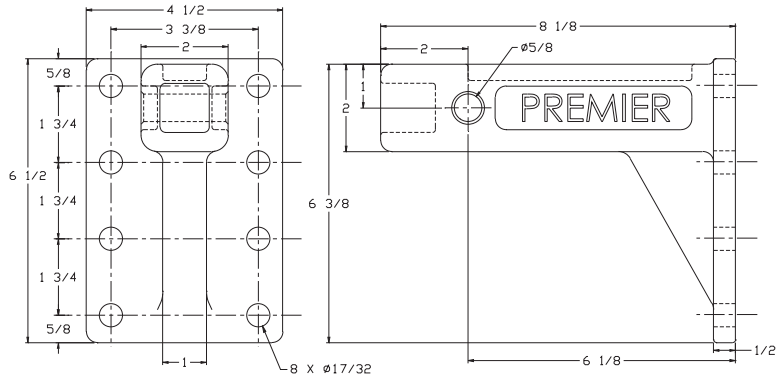
Accessories

165 Receiver



Designed for superior strength, the 165 is a one-piece, solid steel casting, adjustable mount for 2 in. receiver-type connections.

It allows for three different vertical height positions for mounting Premier 150 & 160 couplings (pages 34 & 35).

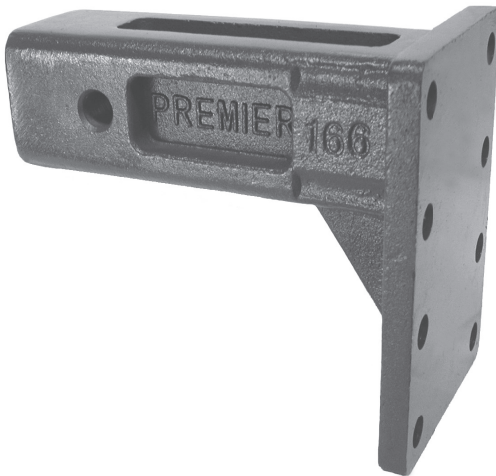


SPECIFICATIONS

Maximum Gross Trailer Weight:	10,000 lbs.	(4,535 kg)*
Maximum Tongue Weight:	1,000 lbs.	(454 kg)*
Unit Weight:	11 lbs	(5 kg)
Pin Diameter:	5/8 in.	(16 mm)

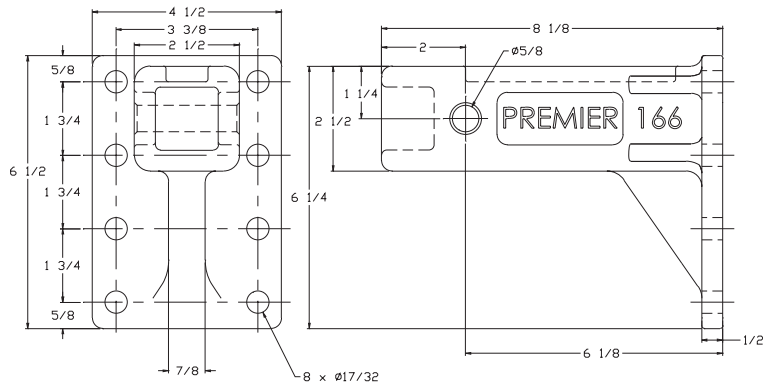
**Stated capacities to be reduced accordingly if receiver receptacle unit has less capacity.*

166 Receiver



Like our 165 Receiver, the 166 is also a single, solid steel casting, adjustable mount receiver, except it is used in 2 1/2 in. receiver-type connections.

It allows for three different vertical height positions for mounting Premier 150 & 160 couplings (pages 34 & 35).



SPECIFICATIONS

Maximum Gross Trailer Weight:	12,000 lbs.	(5,443 kg)*
Maximum Tongue Weight:	1,200 lbs.	(544 kg)*
Unit Weight:	15 lbs.	(6.8 kg)
Pin Diameter:	5/8 in.	(16 mm)

**Stated capacities to be reduced accordingly if receiver receptacle unit has less capacity.*

IMPORTANT GUIDELINES that apply to all Premier Receivers

- To be attached by 5/8 in. pin only
- Only Grade-8 fasteners properly torqued should be used to attach couplings
- Never attempt weld repair of damaged or defective receivers or receiver receptacles
- If receiver receptacle has a less capacity do not exceed it
- Clean and inspect accessories for damage or excessive wear before each and every use
- Do not bind-up (Jackknife) any application as stresses can cause damage to products or components, resulting in failure and detachment of the trailer while in use

