

2200 Air Adjusted Coupling

ORDERING INFORMATION



OPERATION WITH
OR WITHOUT AIR
SERVICE CHAMBER

Coupling Only:

- 2200
- 2200L: 2200 with 2075K Low Profile Lever Kit installed.

Standard Installation Kit:

- 2200A: 2200 Coupling, 501 Bolt Kit, 281 Air Chamber, 267 Air Chamber Adapter Bracket, 271 Thimble

Optional Accessories:

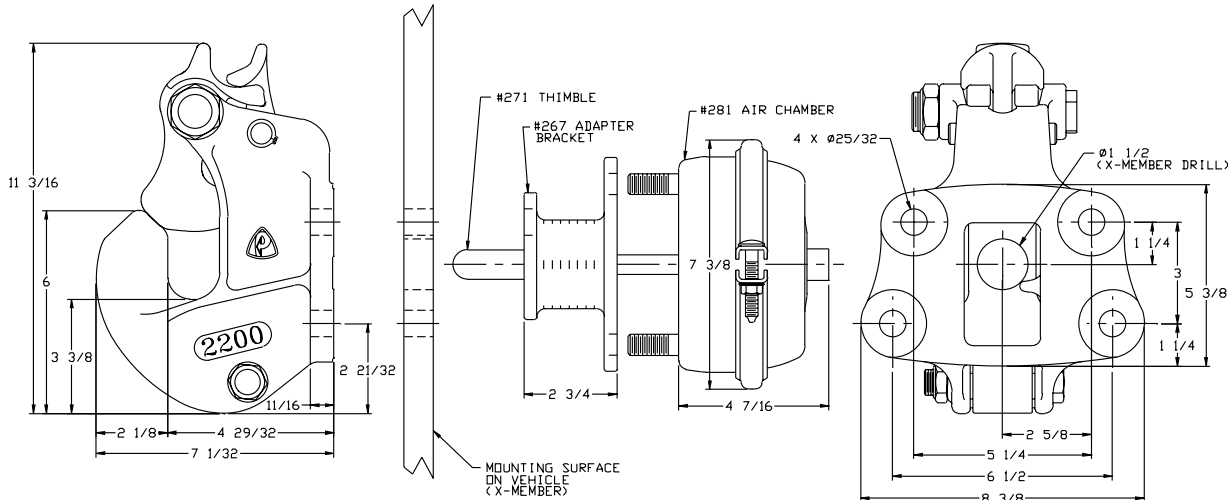
- **Air Chamber 282 Type-30 (page 67):** Provides a larger diaphragm for greater shoe force compared to 281 Air Chamber.
- **Air Chamber Brackets (page 67):** 267H (3/4 in. / 19 mm), 267F (4 5/8 in. / 117 mm)
- **Low Profile Lever Kit 2075K:** Designed for low clearance installations (enables one-handed latch operation from the left side).
- **Thimbles (page 67):** 271B (4 3/8 in. / 111 mm), 271C (5 1/2 in. / 140 mm)
- **Drawbar Guides 438 (page 66):** Helps guide drawbar eye into coupling.
- **Wear Gage 14014 (page 66):** To determine hook wear limits.
- **Latch Gage 14026 (page 66):** To determine latch gap limit.
- **Bolt Kit 501SPL (page 68)**

The model 2200, like our ever popular 270 coupling, features the most popular mounting bolt pattern in the industry. All our 2000 series couplings feature exceptional latch strength, easy operation and low maintenance. All 2000 series couplings can be operated with or without an air service chamber.

SPECIFICATIONS

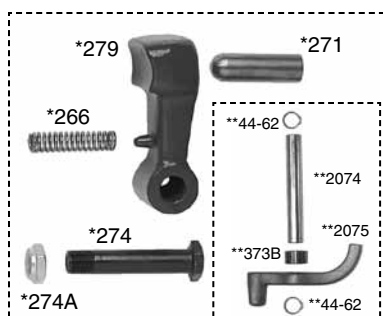
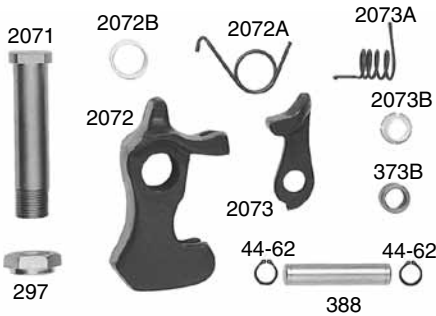
Maximum Gross Trailer Weight:	100,000 lbs.	(45,359 kg)
Maximum Tongue Weight:	20,000 lbs.	(9,071 kg)
Ultimate Latch Capacity:	60,000 lbs.	(27,215 kg)
Maximum Eye X-Section:	1 13/16 in.	(46 mm)
Minimum Eye Opening:	2 3/8 in.	(60 mm)
Unit Weight:	29.8 lbs.	(13.5 kg)

STANDARD INSTALLATION DRAWING



Pushrod length is 3 5/8 in. (92 mm) plus thickness of mounting structure for standard installations as illustrated.

REPLACEMENT PART INFORMATION



2000PK Parts Kit Includes:

- | | |
|----------------------|------------------------|
| 44-62: Snap Ring (2) | 2073A: Spring |
| 297: Locknut | 2073B: Bushing |
| 373B: Spacer | *266: Spring |
| 388: Pin | *271: Thimble |
| 2071: Bolt | *274: Bolt |
| 2072: Latch | *274A: Locknut |
| 2072A: Spring | *279: Shoe |
| 2072B: Bushing | **2075: Handle |
| 2073: Latch Lock | **44-62: Snap Ring (2) |
| | **2074: Pin |
| | **373B: Spacer |

*Not included in parts kit, available individually.
**Available as a separate kit (2075K)

IMPORTANT GUIDELINES that apply to all Premier Air Adjusted Couplings

- Do not weld on any coupling assembly
- Always use Grade-8 fasteners properly torqued
- Do not apply lubricants to the coupling hook
- Air service chamber must be Type-24 or Type-30 with 90-120 PSI air supply
- Clean & inspect coupling for damage & excessive wear prior to each and every use
- Lubricate all coupling components at a minimum of 90 day intervals
- Do not bind-up (Jackknife) any application as stresses can cause damage to products or components, resulting in failure and detachment of the trailer while in use

