



PREMIER MANUFACTURING COMPANY THE FIRST NAME IN QUALITY COUPLINGS

INSTALLATION AND OPERATION OF 2075K HANDLE KIT

Installing Latch Assembly:

- Use the 2074 pin provided as a tool to remove the existing pin. After removing snap rings, place 2074 on either side of existing pin, **maintain contact between pin ends** while softly tapping 2074 pin through coupling body. Using this procedure will help maintain alignment of internal parts and while also removing existing pin. (If parts do not install properly, or if parts are removed, see back for instructions.
- Determine which side the 2075 lever will be installed, then slide 373B spacer over 2074 pin on same side (see figure 1).
- Slide 2075 lever over 2074 pin and against 373B spacer.
- Secure entire assembly with snap rings on both ends of the 2074 pin.

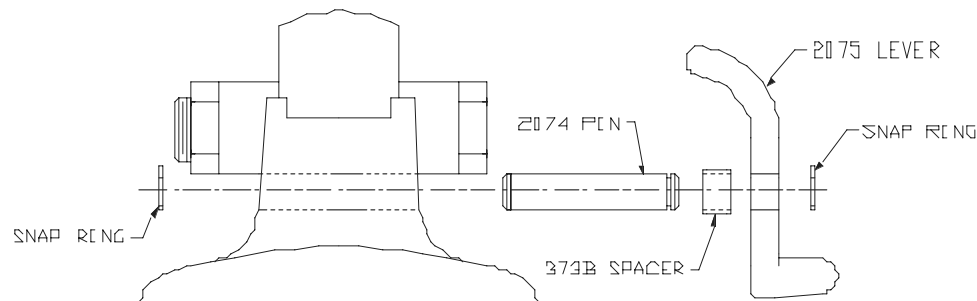


Figure 1

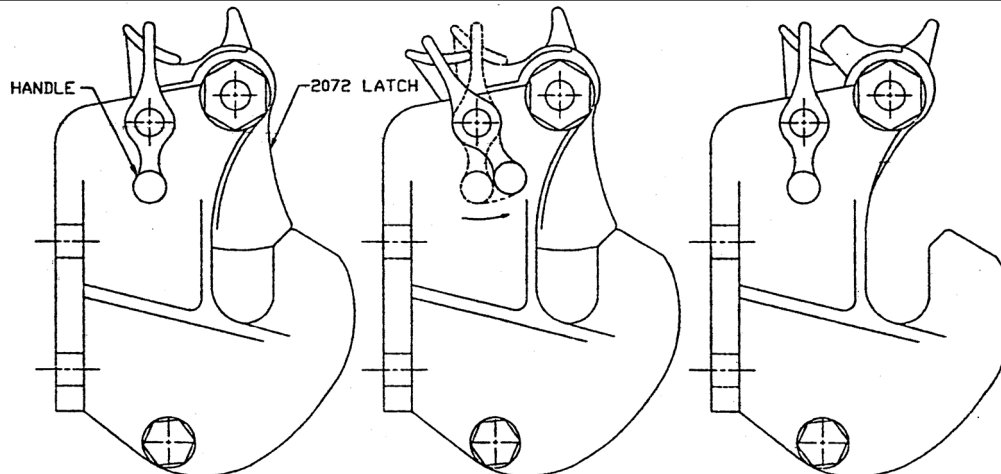


Figure 2

Figure 3

Figure 4

Opening Latch Assembly:

- Facing the mounted coupling, grasp bottom of handle with fingers and pull forward (fig. 2 and 3).
- While holding the handle forward, push in and hold the 2072 main latch (fig. 3 and 4).
- Slowly release the handle entrapping the 2072 main latch in the open position (fig. 3).
- Couple or uncouple the equipment.

Closing Latch Assembly:

- The latch can be closed in the reverse of above or will close automatically when handle is again pulled forward. **(WARNING! KEEP FINGERS CLEAR OF 2072 LATCH AND HOOK PORTION OF COUPLING WHEN CLOSING.)**

Installation of Removed Latch Components:

- Referring to Figure 5, insert #2073A spring into upper left side of body and slide 2074 pin partially through body and spring (make certain that hook on #2073A spring is positioned to the right).
- Insert #2073B bushing right to left into #2073 latch lock. Position #2073 latch lock next to 2073A spring inside coupling body. Slip hook on #2073A spring over foot on #2073 latch lock. Slide #2074 pin into #2073 latch lock just far enough to hold in position.
- Place #373B spacer along side #2073 latch lock and snugly against cap on #2073A bushing. Slide the #2074 pin through the #373B spacer and the other side of coupling body. Install other 373B spacer and 2075 handle on desired side of coupling. Secure pin with #044-62 retainer rings.
- Insert #2072A spring into upper left side of body. Position spring so that tang on spring catches under top ledge on coupling body. Hook on spring should be at right. Insert #2071 pin into left side of body and just far enough through #2072A spring to hold in position.
- Insert #2072B bushing into #2072 latch. Place #2072 latch directly over top the #2072A spring and lower into position. Hook on #2072A spring should catch behind #2072 latch. Slide #2071 pin through latch and other side of coupling body. Secure pin with #297 lock nut.
- Tighten all nuts and check for proper operation.
CAUTION: Do not over tighten fasteners as this may cause binding and/or premature wear of the latch assembly.
- Lubricate latch assembly at rotation points using a light penetrating oil. Open and close latch assembly several times to distribute lubricant thoroughly.

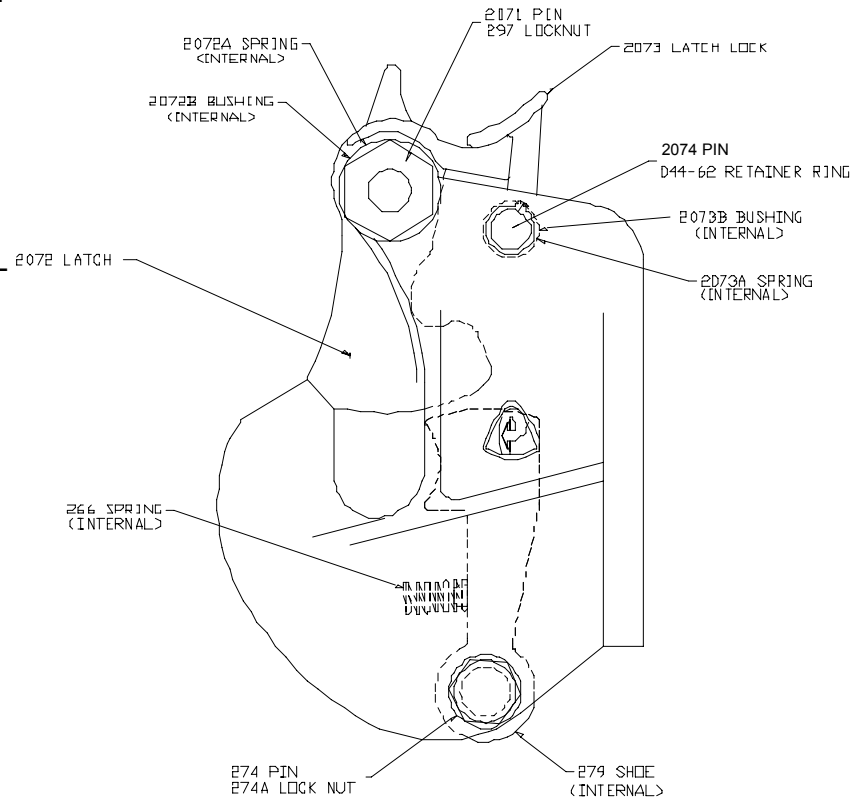


Figure 5