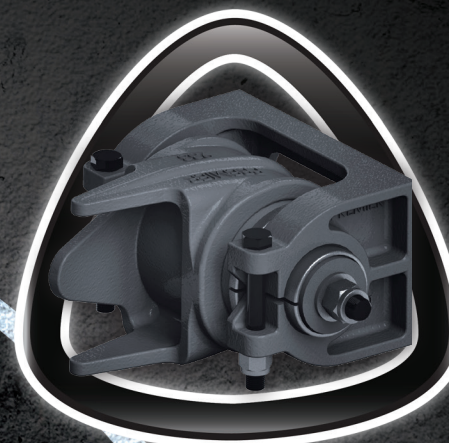


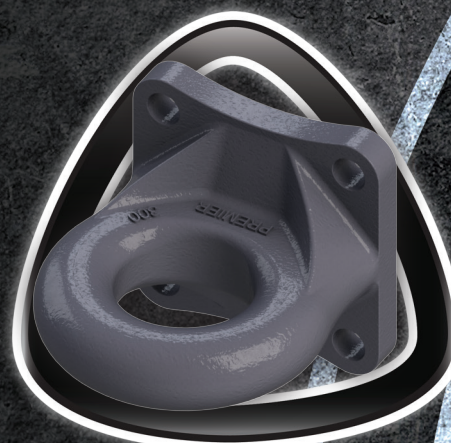
**COUPLINGS &  
PINTLE HITCHES**



**HINGE  
ASSEMBLIES**



**DRAWBAR  
EYES**



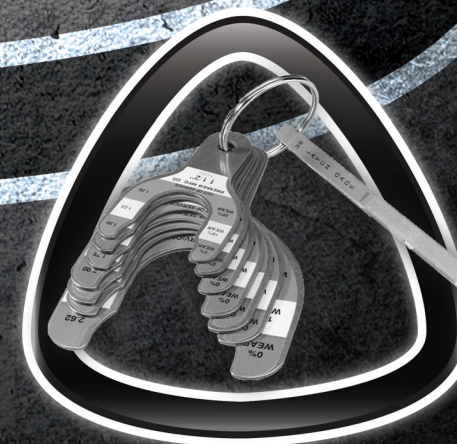
**JACKS**



**FRONT END  
HOUSINGS**



**ACCESSORIES**





# INNOVATION | TECHNOLOGY | PERFORMANCE



## SAF-TITE

Unsurpassed strength  
at an incredible value



## PREMALLOY

Work hardening material  
perfect for off-road and  
aggregate applications



## EXTENDED LIFE

Direct injection of lubrication  
at latch pivot points creates  
smooth consistent  
latch performance



## SAF-T-LATCH

Closes with the release of  
the air brakes, acting as a  
fail-safe when the latch is  
inadvertently left open





# EXTENDED LIFE

Your Ally Against Corrosion

Direct injection of lubrication at latch pivot points creates smooth consistent latch performance



Part Number Shown: 2200EL





**PREMIER**  
MANUFACTURING CO.

## COMBINATION COUPLING | 150 / 150-1

- Extremely strong with a modest size
- Perfect for light and medium duty towing capacities
- Compact, low profile with patented trigger latch technology
- Swing latch rotates sideways, out of the way, in either direction
- 150 Coupling includes a 2" Ball (Part # 155)\*
- 150-1 Coupling includes a 2 <sup>5</sup>/<sub>16</sub>" Ball (Part # 156)\*

\*Ball sizes are interchangeable and could be ordered as an accessory with either part number

Learn more at [premier-mfg.com](http://premier-mfg.com)







**PREMIER**  
MANUFACTURING CO.

## JACKS | JIFFY / STANDARD / UTILITY

- **Jiffy Jack:** Saves time with one-lever lowering and retracting of the leg without cranking. 5,000 lbs operational capacity. 10,000 lbs static capacity.
- **Standard Jack:** Designed with a quick-action, spring activated, folding handle that is compact and out of the way. Built with a tube support collar on the outside tube for added strength. 5,000 lbs operational capacity. 10,000 lbs static capacity.
- **Utility Jack:** Designed with a quick-action, spring activated, folding handle that is compact and out of the way. Built with a strong, precision fit square tubing that helps reduce penetration of outside contaminants. 2,500 lbs operational capacity. 5,000 lbs static capacity.

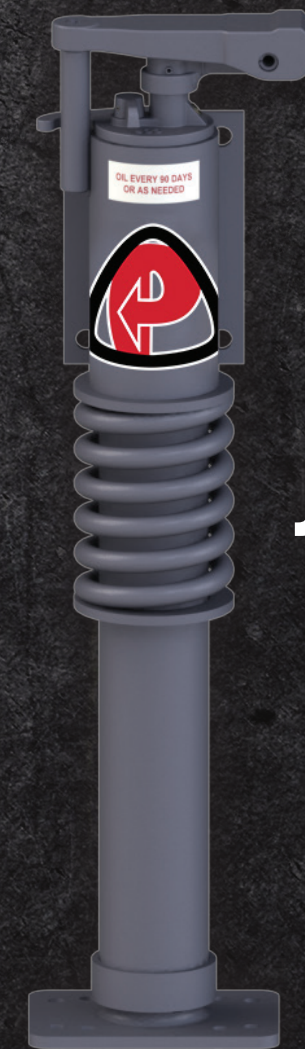
For specific part numbers based on available options, check out the Jack Selection Guide at [premier-mfg.com](http://premier-mfg.com).



**UTILITY**



**STANDARD**



**JIFFY**





**PREMIER**  
MANUFACTURING CO.

## COUPLING ASSEMBLY | 820ELA

- Features patented SAF-T-LATCH technology that acts as a safeguard to close the latch with the release of the air brakes
- Exceptionally safe, strong, easy to use latch mechanism
- Extended Life (EL) lubrication points, and the most popular bolt hole pattern in the industry
- Ensures the latching mechanism is closed while the vehicle is in motion

Closing and making sure the latch is closed correctly is always the responsibility of the person making the coupling connection and the driver's responsibility to verify that the equipment is correctly connected prior to moving the vehicle.

Learn more at [premier-mfg.com](http://premier-mfg.com)



**SAF-T-LATCH**

Lock In Safety  
And Security